

"Zero Trust" Security : L'approche HPE de l'architecture de sécurité.

Bechtle-IT Forum | 13.06.2023 | SwissTech Convention Center Lausanne

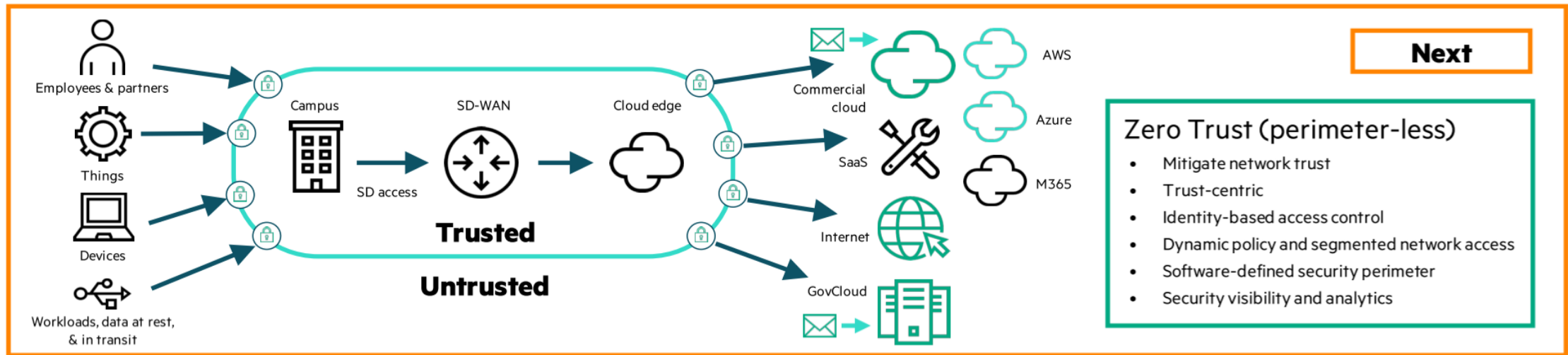
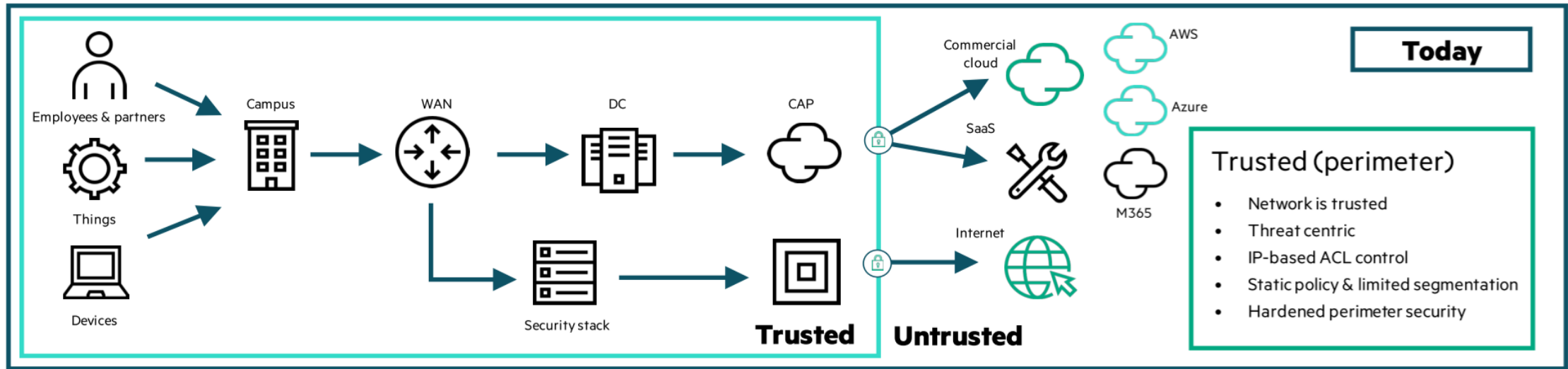
Cyril Vernet, Cloud Solutions Architect, HPE
Lionnet Thiery, Senior Systems Engineer, Bechtle Suisse

An abstract, colorful background image featuring swirling patterns of purple, blue, and green, with a dense field of small, multi-colored square and circular particles scattered throughout, resembling a microscopic view of a material or a digital data visualization.

Zero trust security



Zero Trust Security



4 reasons to invest in zero trust



Enterprise IT

Will continue to transform.
Legacy systems are costing you money to continue support and are more vulnerable to attack.



The adversary

Is innovating.
Hackers can innovate faster than any corporation.
Exponential growth in ransomware and other attacks indicates that continual innovation is the only way to protect against cybercrime.



Regulations,

complexity, and costs are rising.
New security innovations not only help companies meet current regulations but also adapt faster as the regulatory landscape evolves.

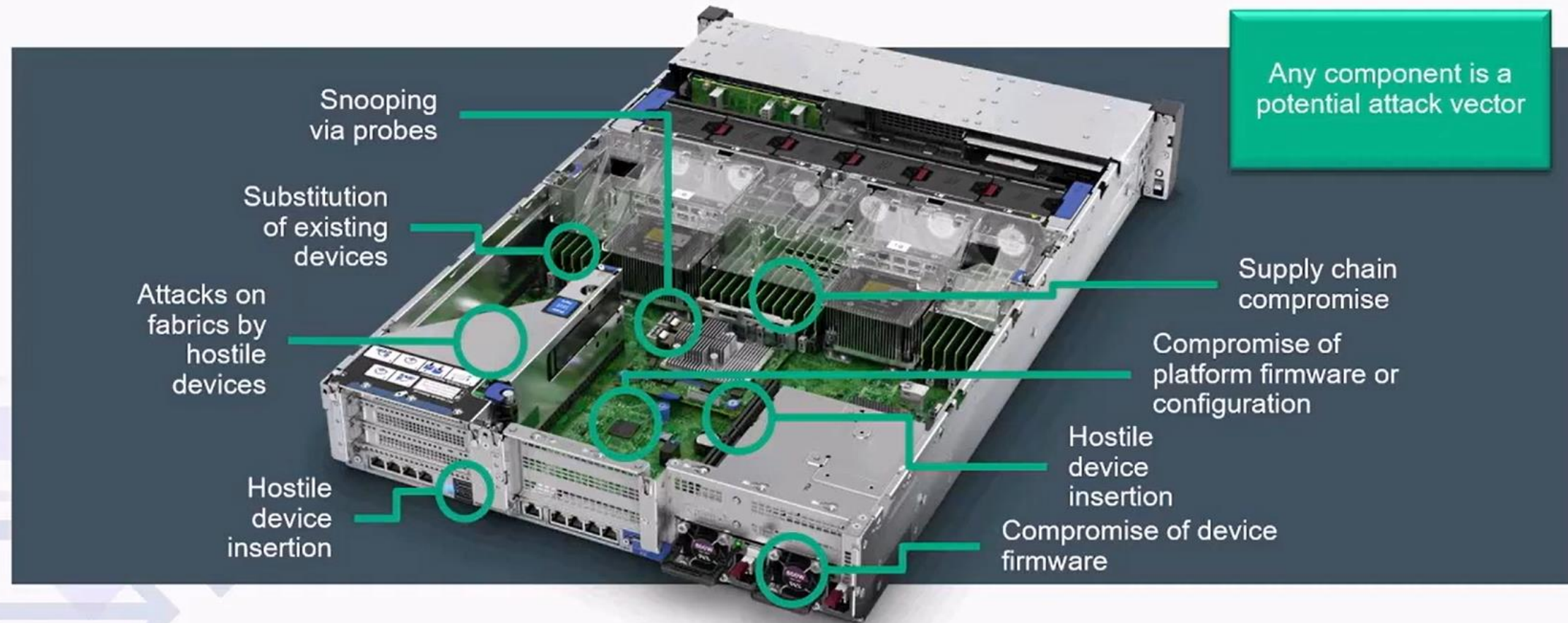


Skills

Scarcity is a top challenge.
Fill your security talent gaps with managed services
Partner as you develop your Cyber security team.



Component Security: The Foundation for Zero-Trust



HPE Zero Trust security model

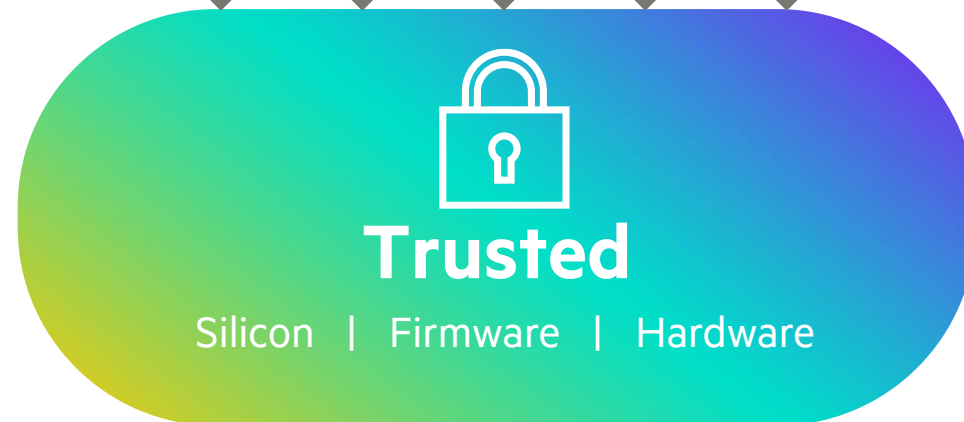
Built into everything we design

HPE is leading efforts by designing a security platform with zero trust architecture that protects data at every computing level, on every device, from edge to cloud.



Untrusted

Employees & Partners | Things | Devices



Untrusted

Cloud | Data Centers | Internet | GovCloud



The background of the slide is an abstract, colorful image with a dense, textured appearance. It features a mix of green, purple, and blue tones, with small, bright, pixelated or crystalline shapes scattered throughout, giving it a digital or microscopic feel.

HPE Security offering

Security from the inside out



HPE Security Solutions

Enabling zero-trust security architectures from edge to cloud

Edges Colocation Datacenters Clouds

MEASURED | ATTESTED | VERIFIED

HPE Alletra Storage

HPE ProLiant Compute

HPE Cray Supercomputing

HPE Aruba Networking

HPE Ezmeral Software

HPE Services



How HPE follows zero trust principles



Compute

- HPE iLO
- Platform certificates
- IDevID
- Trusted supply chain
- Pensando Distributed Services Card



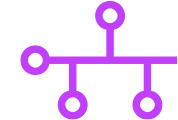
Storage

- Encryption
- Self-encrypting drive
- HPE InfoSight network analytics
- HPE GreenLake storage as a service



Software

- SPIFFE
- SPIRE



Networking

- ClearPass policy manager
- Aruba

HPE GreenLake Security

HPE supply chain risk management practice & controls

Zero Trust starts at the supply chain



Design ▶ Sourcing ▶ Build ▶ Fulfillment ▶ Sustainment & Operations ▶ Distribution ▶ Disposal

Prevent, monitor, detect, analyze & report incidents of confirmed counterfeit & malicious taint



HPE Security architectural standards

Security continues at the delivery location (hardware)

Google Play Games Apps Movies & TV Books Children

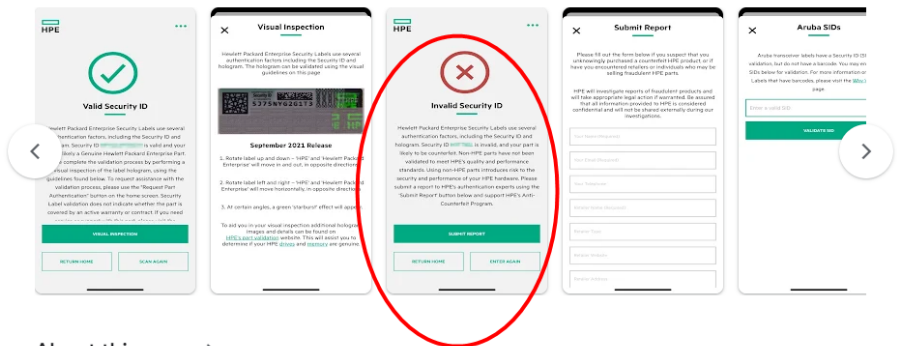
HPE Parts Validation

Hewlett Packard Enterprise Company

5K+ Downloads PEGI 3

Install Add to wishlist

This app is available for some of your devices You can share this with your family. Learn more about Family Library



About this app →

The HPE Parts Validation mobile app allows you to conveniently validate HPE Security IDs indicating that you have purchased Genuine HPE Parts. The app will guide you through the additional visual inspection or connect you directly with HPE's authentication experts. For more information on HPE Security Labels and the HPE Parts Validation app, visit www.hpe.com/products/validate.

Key Features

...

Updated on
25 Jul 2022

Developer contact ▾

More by Hewlett Packard Enterprise Company →

- HPE Storage Connectivity
Hewlett Packard Enterprise Company
- HPE Spaces
Hewlett Packard Enterprise Company
- HPE Engineer Notification
Hewlett Packard Enterprise Company
- HPE Managed Services On Duty
Hewlett Packard Enterprise Company
- HPE SOS

HPE Security architectural standards

Security continues at the delivery location (software)

Firmware Compliance Issue Details

Check Firmware Compliance

Details

Group baseline Hotfix 2021.10.4 + SPP 2021.10.1 (20 Jul 2022)

Server Name	Compliance Status	Current Baseline	Details
brs-esxi.lan	Not compliant	SPP 2022.03.1 (15 Sep 2022)	Details

Recent Gro

Group firmware c
Fort Collins firmw
progress
10/3/2022 1:47:1

Group firmware compliance

Check Firmware Compliance

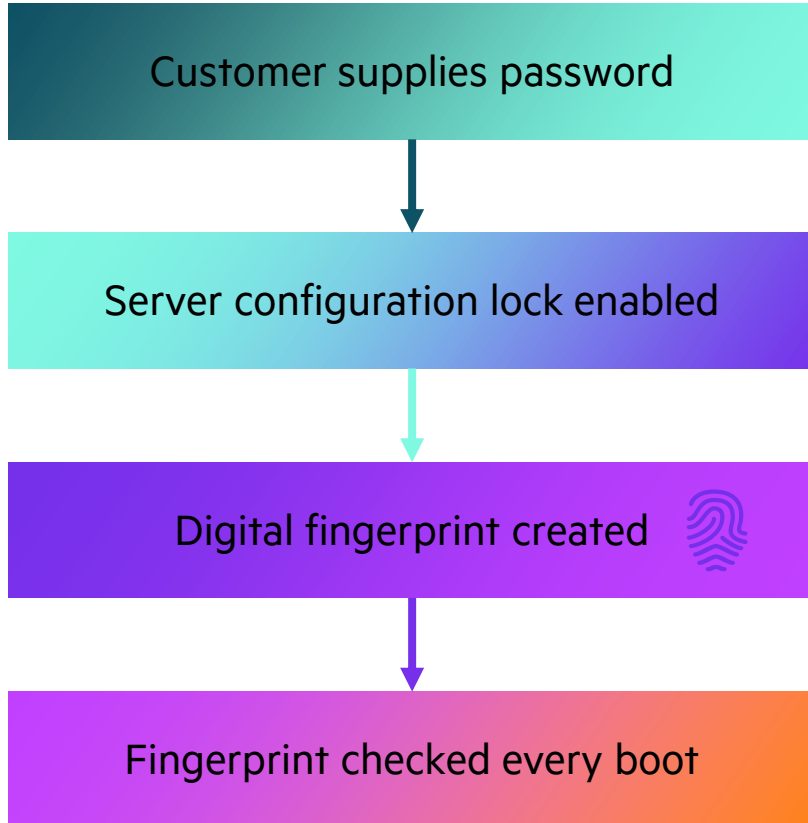
A firmware compliance check will be run on the Fort Collins with firmware baseline Hotfix 2021.10.4 + SPP 2021.10.1 (20 Jul 2022)

Cancel
Run Compliance Check



HPE Trusted Supply Chain: Server configuration lock

Protecting systems in transit and when deployed in unsecure locations



Unmatched security

Silicon Root of Trust from HPE

Ultimate firmware protection

- Silicon root of trust from HPE
- TPM2.0 as standard
- Secure encryption and self-encrypting drive (SED) support
- Secure supply chain

Runtime attack detection

- Detection of compromise
- Full recovery capability
- Runtime firmware verification



Protect, detect and recover from attacks with industry-leading encryption and firmware protection

 **Cyber Catalyst** SM by **Marsh** SM ¹

Secure data within the server

- Secure with Azure Active Directory, Azure Security Center, and Azure Sentinel
- Runtime protection to defend the from attacks and vulnerabilities
- Regular consistent feature and security updates for all components

Leading regulatory compliance

- Building in security
- GDPR and U.S.A. regulations
- FIPS 140-2 Level 1
- Machine learning applied to behavioral actions
- HPE InfoSight Security



An abstract, colorful background image featuring a complex, textured pattern of green, purple, and blue, resembling a microscopic view of a material or a digital data visualization.

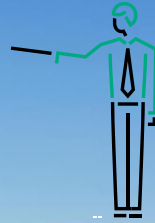
IT security solutions and ecosystem

Enabling zero-trust security architectures from edge-to-cloud
to transform security from a barrier to an innovation accelerator



HPE GreenLake

67% of respondents said that their security teams have no visibility into or control over the activity of every user and device connected to their IT network, which leaves systems susceptible to attacks that use credentials.



HPE GreenLake Private Cloud

Get the flexibility of secure private cloud services at the edge, in colocations, and in your data center with HPE GreenLake.

HPE GreenLake Central Security

Get secure and role-based access to trial, subscription, and consumption of HPE GreenLake service offerings.

HPE GreenLake for Data Protection

New HPE GreenLake cloud services for data protection help you to tackle cyber threats & ransomware.

HPE Ezmeral

The time to resolve a cyberattack has grown 3.5x since 2010.



HPE Ezmeral Data Fabric Security

Get security out-of-the-box and ease-of-use security capabilities without compromising results in high data quality.

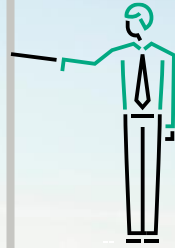
HPE Ezmeral Data Fabric File & Object Store

Get universal data access, data ops agility and accelerate innovation with consistent data security and data sovereignty across cloud and on-premises containers.

HPE Data Protection

60% of organizations report experiencing at least one attempted ransomware attack in the last 12 months. This is making investments in security a top priority, as 62% of companies surveyed expect to increase cybersecurity spending.

HPE and Enterprise Strategy Group report, January 2020



Ransomware Protection and Disaster Recovery with Zerto

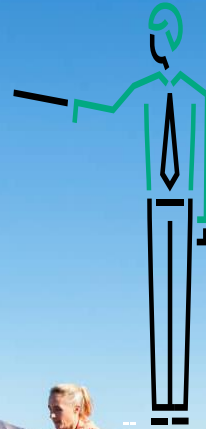
Leverage the industry-leading solution for ransomware protection, disaster recovery, and data protection as a service — for any app, any cloud, and any recovery SLA.

Data Protection & Retention

Address all of your retention and compliance needs with our complete portfolio of Secure, scalable and affordable HPE tape storage and services.

HPE Aruba Networking

60% of organizations are aware of fewer than 75% of the devices on their network.



Aruba Edge-to-Cloud Security for the Intelligent Edge

Gain full visibility, control, and enforcement with a built-in foundation for Zero Trust and SASE frameworks.



ZERO TRUST : Et les facteurs Humains ?

La désinformation par le net

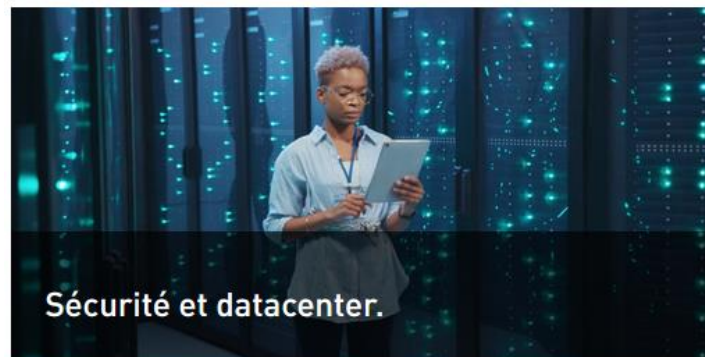
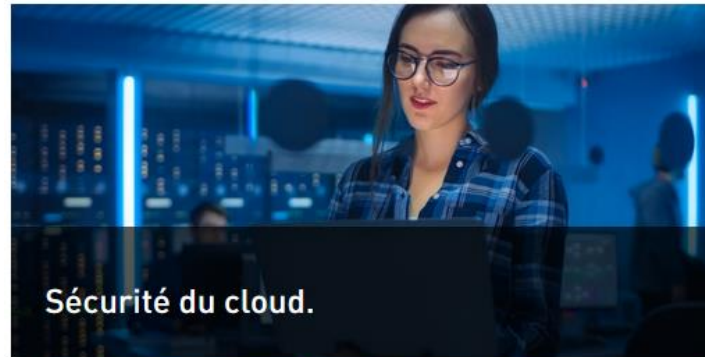
La confiance entre les personnes

La technologie réduit les risques mais...

Ai-je bien le résultat attendu ?



Bechtle Security – la solution 360° pour une sécurité maximale.



Aperçu des avantages de notre approche holistique



Plus de sécurité IT.

Toutes les mesures critiques à l'égard de la sécurité sont harmonisées entre elles, elles s'entremêlent et offrent la meilleure protection possible.



Les ressources internes se libèrent.

Des mesures coordonnées facilitent le travail dans la vie quotidienne. L'objectif : plus de temps pour les affaires courantes.



Une gestion plus simple.

Au lieu de communiquer avec beaucoup de fabricants différents, avec Bechtle, vous n'avez qu'un seul interlocuteur.



Les gens, les processus et les technologies sont réunis.

Des mesures de sécurité conformes aux exigences permettent un travail et un accès sécurisés en tout lieu.



Grande réactivité.

Avec nos Managed Services, vous réagissez rapidement et sans délai à des activités inhabituelles sur votre réseau.



Fini le patchwork.

Souvent, les solutions isolées ne sont pas harmonisées et ouvrent de nouvelles portes d'entrée potentielle aux attaques. Nous prévenons les failles sur votre réseau.

Merci!

Des questions? Contactez-nous: it-forum.ch@bechtle.com

Plus d'informations :
[bechtler.com](https://www.bechtler.com)

