

CHANGE

Bechtle IT-Forum 2021.

The Next Normal – Wie bereiten sich Unternehmen auf die Anforderungen im Bereich Kommunikation und Kollaboration vor?

Christoph Wittlinger | Client Technologist | Lenovo Schweiz
Grégory Milius | Channel Account Manager CH & A | Bechtle Schweiz AG

The future is flexible — and hybrid

“

82% of company leaders plan to allow employees to **work remotely** some of the time.

”



Source: Gartner newsroom, “Gartner Survey Reveals 82% of Company Leaders Plan to Allow Employees to Work Remotely Some of the Time,” July 2020







Covid19 - work has changed

Video is the new mainstream

CLOUD VIDEO MEETINGS BOOMED IN THE COVID MONTHS



Cloud Web/Video Meetings Market: Comparative License Count Forecast Pre- and Post-COVID-19, Global, 2020

	 Webex	 Zoom	 Microsoft Teams	 Google Meet
 Pre-COVID19*	163M+ Monthly Participants	10M Daily Active Participants	20 Million Daily Active Users	33 Million Daily Active Participants
 Post-COVID19**	600M Monthly Participants	300 M Daily Active Participants	115 Million Daily Active Users	100 Million Daily Active Participants

Source: Frost & Sullivan; Prioritäten der IT Entscheider bei Investitionen im Bereich Kommunikation, Feb. 2021

 Google Meet hardware



TECHNOLOGY PRIORITIZATION PLANS POST COVID-19

CLOUD AND VIDEO ARE TOP OF MIND FOR WORK FROM ANYWHERE

TOP 5 Technology Plans to Prioritize Post-Pandemic : Global, 2020

Cloud-based applications



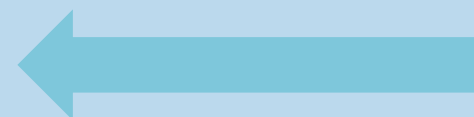
31%



Video Conferencing



25%



Contactless technologies



16%

Robotics and automation



15%

Edge compute/analytics capabilities

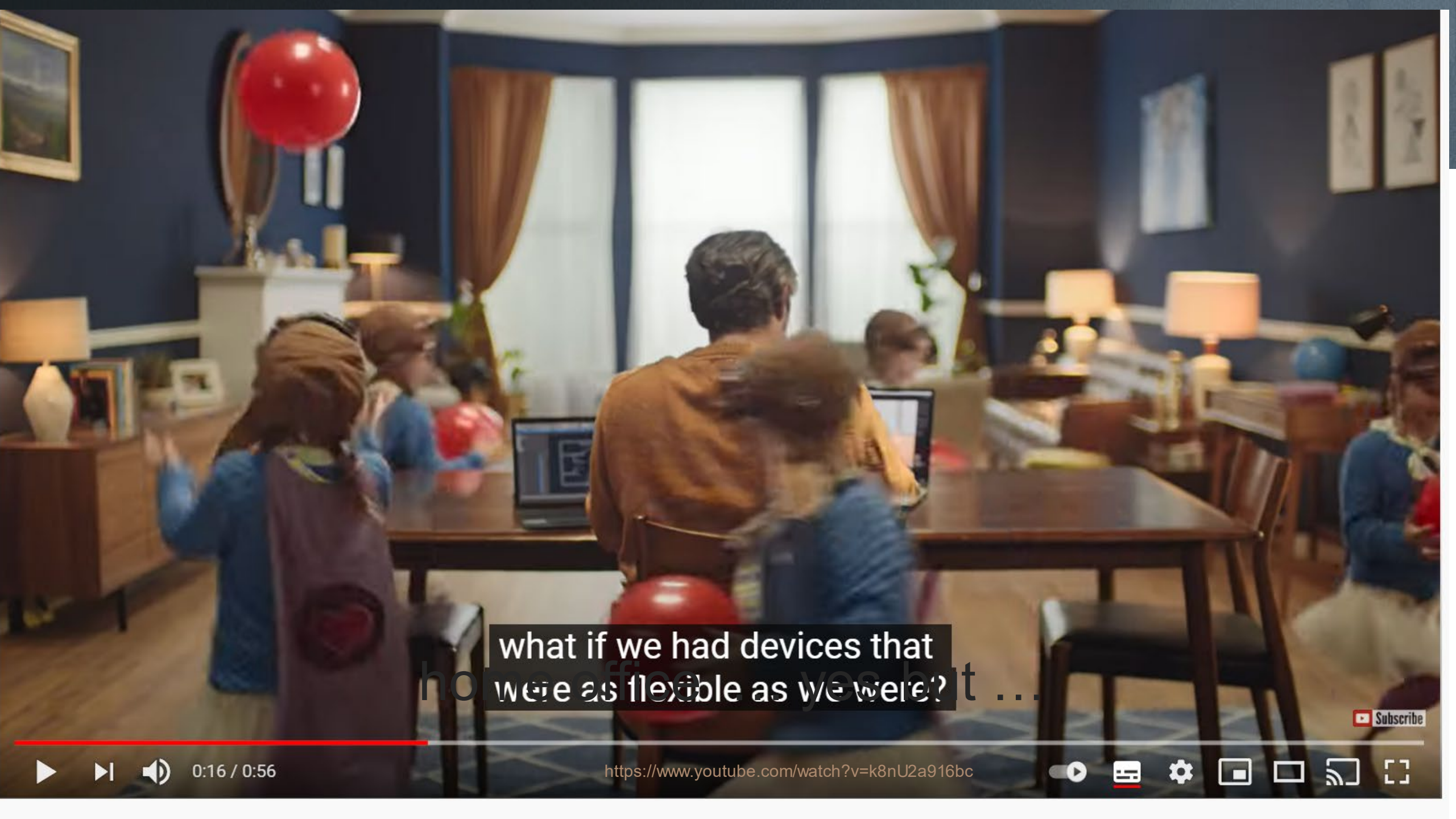


13%

Base: All respondents (n=3,284)

Q15. Post-pandemic, over the next two years, which technology are you planning to prioritize?

Source: End-User Priorities in Communications and Collaboration Investments: A Frost & Sullivan, Survey of IT Decision Makers, February 2021



what if we had devices that
home office were as flexible as we were? yes but ...

Subscribe



0:16 / 0:56

<https://www.youtube.com/watch?v=k8nU2a916bc>




The new office needs flexible meeting spaces with video solutions that **give everyone a seat at the table** no matter where they are.



MORE MEETINGS. MORE ROOMS

DESPITE REAL ESTATE OPTIMIZATION, NUMBER OF MEETING SPACES WILL GROW

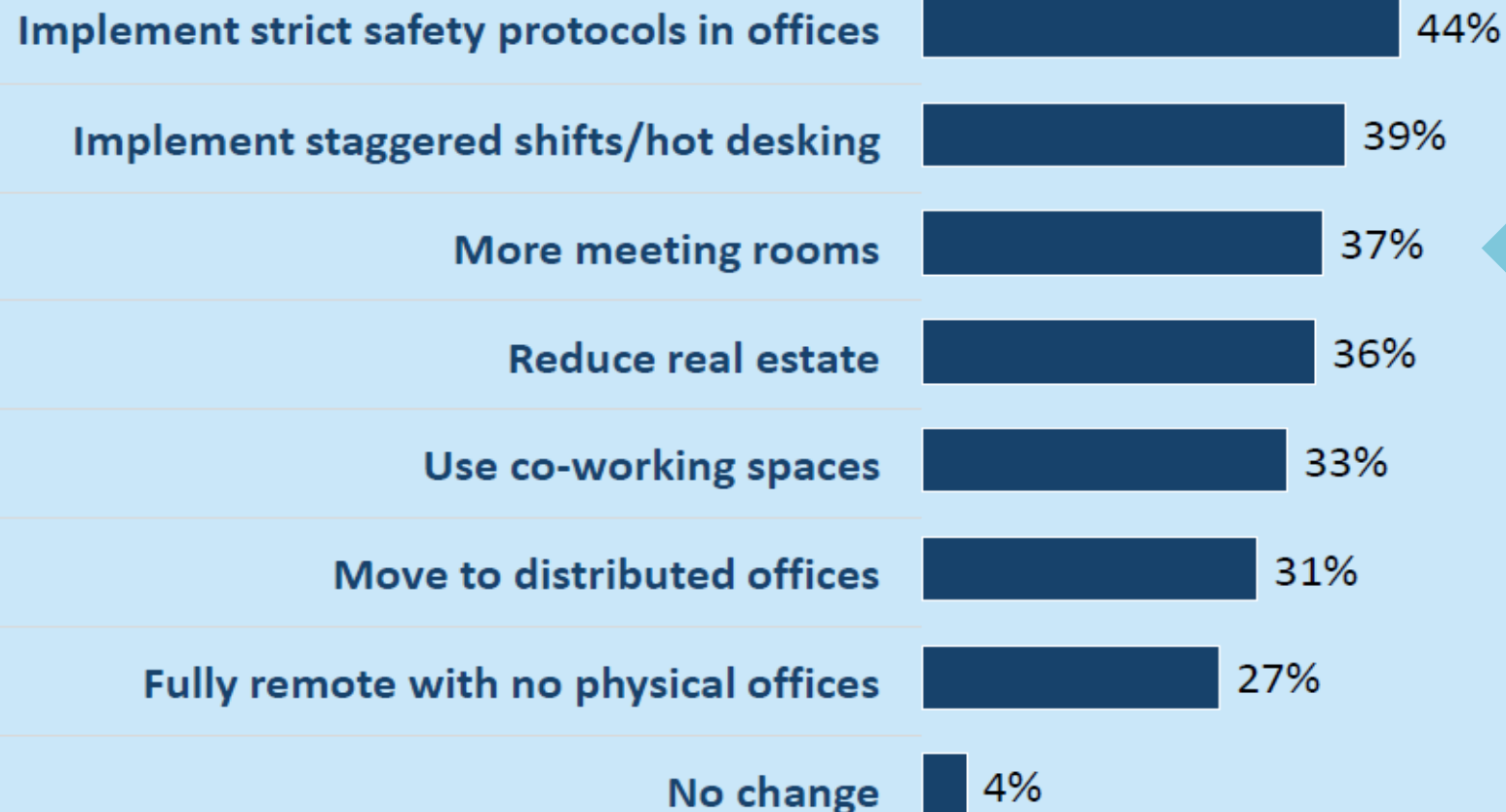
 As traditional offices and work models get upended, hybrid work will lead to dispersed teams and a sustainable demand for video meetings.



COVID-19 IMPACT ON PHYSICAL OFFICE SPACE & REAL ESTATE

ORGANIZATIONS ARE PLANNING RADICAL OPTIMIZATION OF OFFICE SPACE

Expected Changes to Physical Office Space and Real Estate Post -COVID : Global, 2020



Base: All respondents (n=3,284)
Q14. How do you expect your physical office space and real estate to change post-COVID-19?

Source: End-User Priorities in Communications and Collaboration Investments: A Frost & Sullivan,
Survey of IT Decision Makers, February 2021

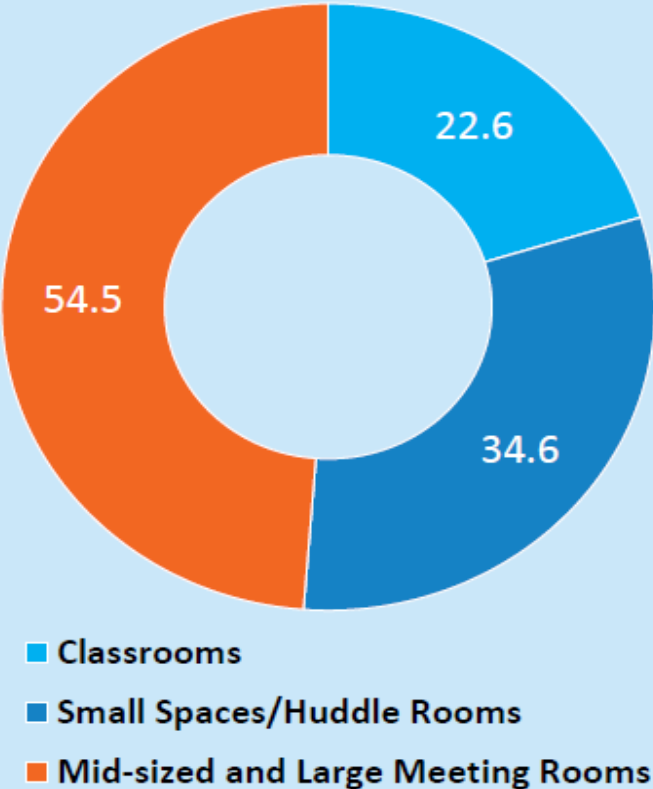


video conferencing - the past was rather expensive

MEETING ROOM COUNT AND VIDEO CONFERENCING PENETRATION RATE

Number of Meeting Rooms and Penetration Rates, Global, 2020: Meeting Room Adoption will Grow Three Fold

Number of Meeting Rooms and Classrooms, Global, 2020 (Million)



Video Conferencing Devices*: Penetration Rate, Global

Segment	Penetration Rate (%)		
	2019	2020	2025
Small Spaces/Huddle Rooms	3.9	5.5	27.8
Mid-sized and Large Meeting Rooms	6.9	8.0	21.6
Classrooms	0.7	1.1	6.1
Total Penetration Rate	3.9	4.6	13.9

3 X

*The above data focuses on technology penetration in rooms; excludes personal and desktop video devices.

Note: All figures are rounded. The base year is 2020.

Source: Frost & Sullivan

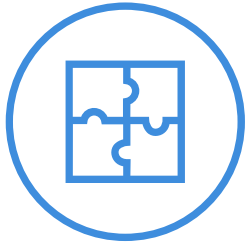


Microsoft Teams Rooms

Enable everyone to be seen, heard, and fully participate from anywhere.

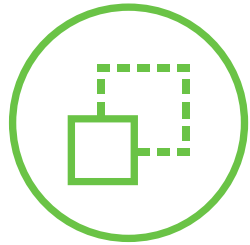
Lenovo collaboration solutions:

Built for the new workplace with cloud management



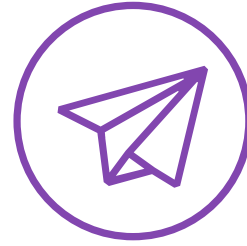
Holistic solutions

Hardware,
software,
services



Flexible/ scalable

Platform
choice/
any room size



Enterprise- ready

Secure and
manageable



Industry partnerships

Joint innovation
and offerings



ThinkSmart Hub

All-in-one
TCO solution

- **Secure** client
- room size **scalability**
- **Remote management**





Innovation at a global scale

The Lenovo logo is displayed in white text on a red rectangular background.A satellite map of the world is shown in the background, with a grid overlay.

\$50B

revenue

A city skyline at night is shown in the background, with a person holding a tablet in the foreground.

4

devices bought
per second

A group of people are sitting around a table in a meeting, looking at documents.

63K

employees

People are working in a laboratory or research facility, looking at equipment.

10K

engineers, researchers,
and scientists

An aerial view of a city at night is shown in the background, with lights from buildings and streets.

180

markets

A manufacturing facility is shown in the background, with a conveyor belt and boxes.

36

manufacturing
facilities

Hands are working on a device, possibly a smartphone, with tools and components visible.

15

R&D locations

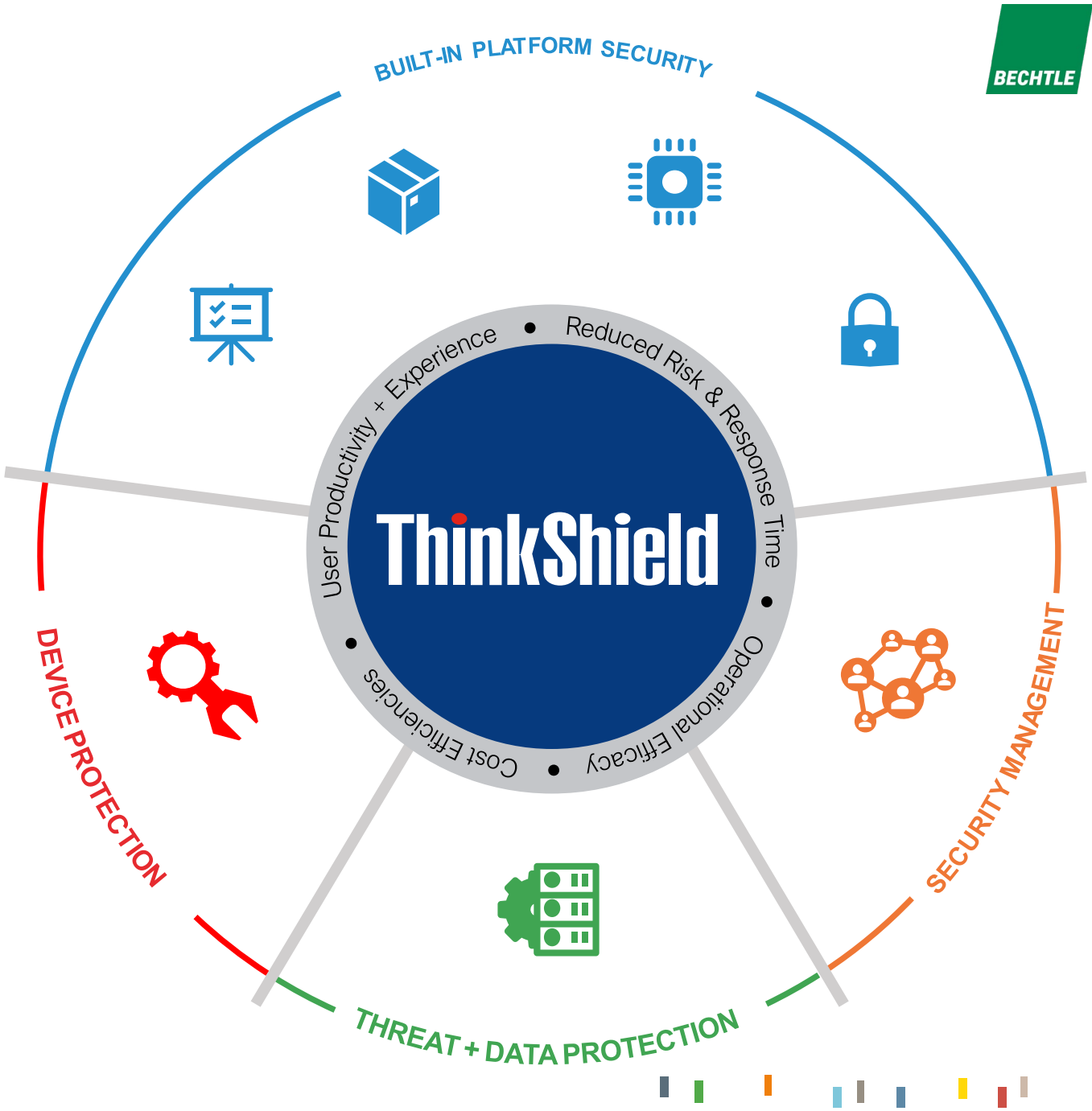
An AI innovation center is shown in the background, with a person walking through a futuristic corridor.

4

AI innovation
centers

A customizable solution that secures critical data and business technologies with comprehensive end-to-end protection.

- ✓ **Security by Design** approach through the entire product life cycle
- ✓ **Supply Chain Security** with robust policies and practices
- ✓ **Advanced solutions** that protect customers from evolving threat landscape



Self-Healing BIOS, Tamper switch, Intel vPRO and more



When BIOS is corrupted or maliciously attacked, the BIOS will “self-heal” and revert to known good backup copy



ThinkShield

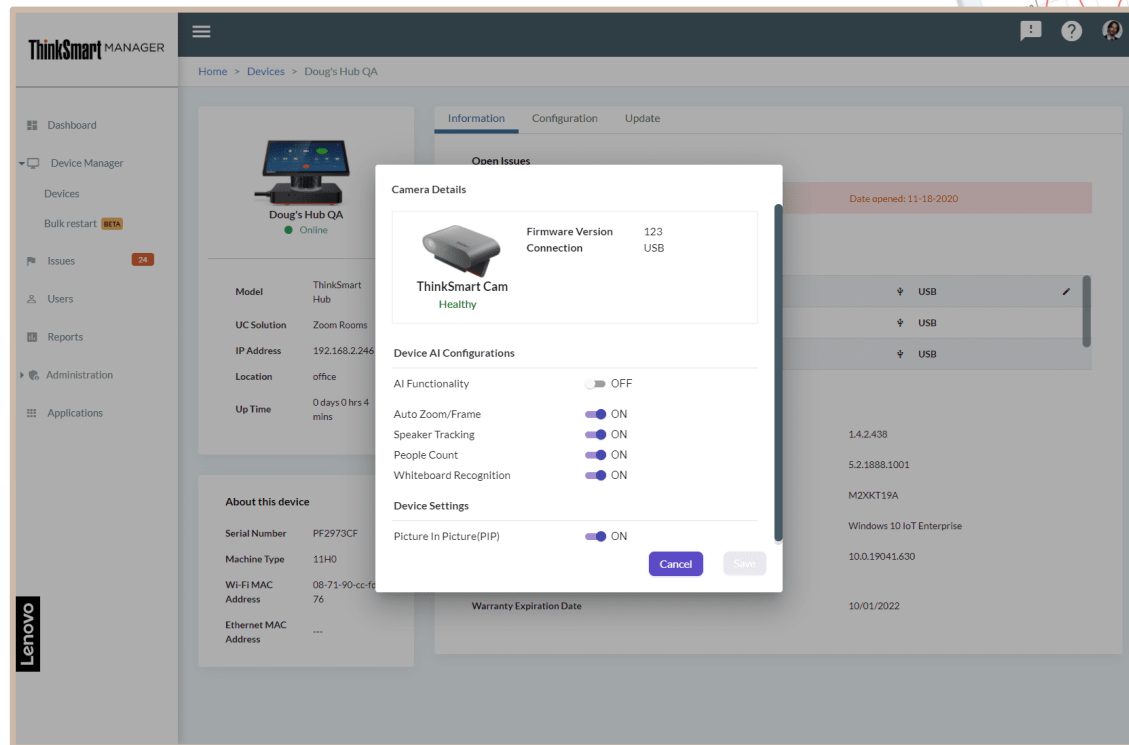
- Helps mitigate attacks against BIOS
- A resilient BIOS for less down time
- Stops “bricking” if a BIOS update is interrupted or fails
- TamperSwitch – SVP admin
- HW Shield



Efficient, proactive
remote management

THINKSMART MANAGER

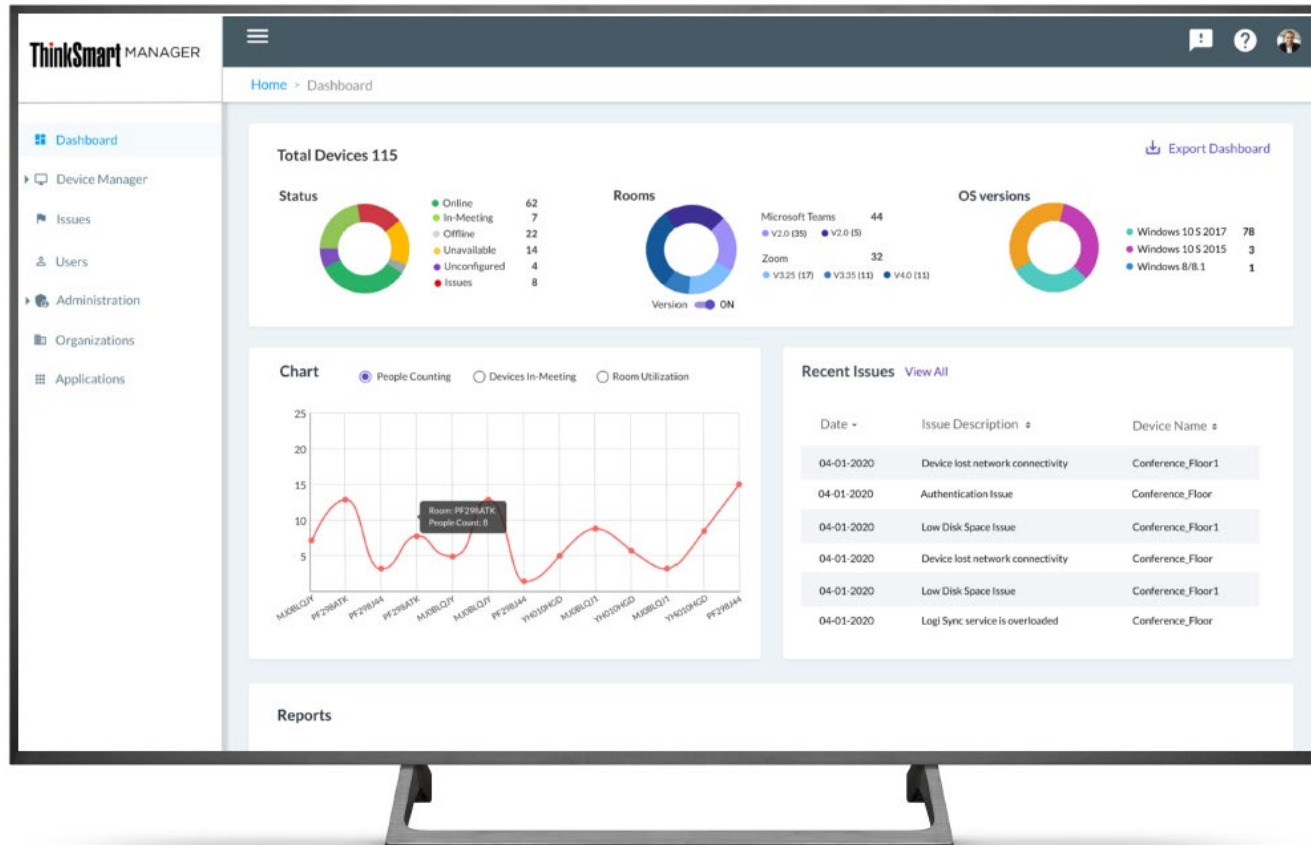
- Optimize
- Monitor
- Streamline
- Secure



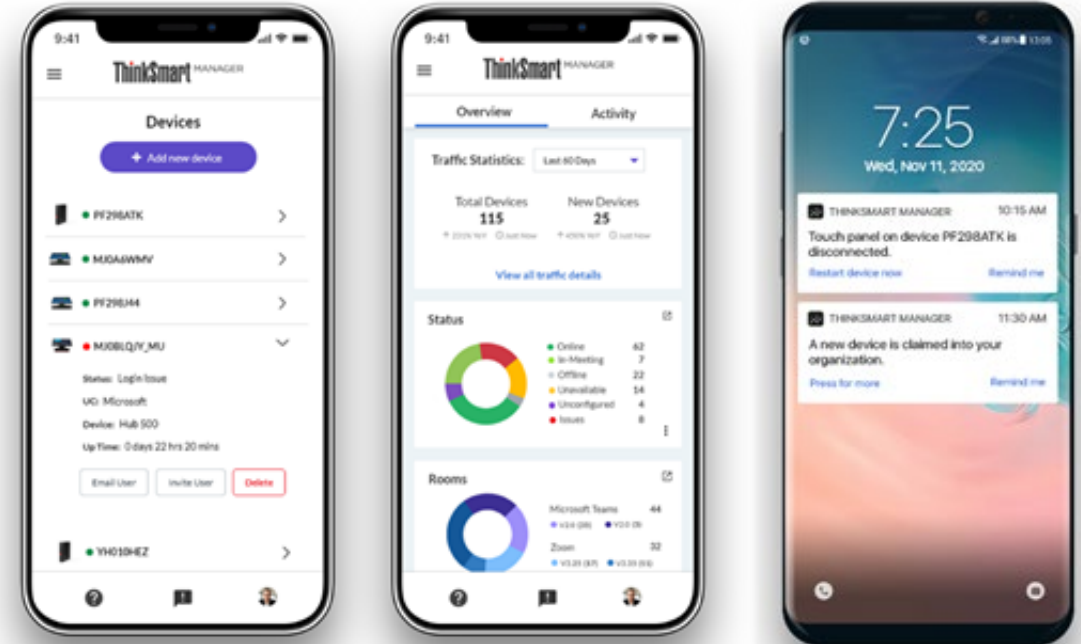
ThinkSmart Manager v2.0.



Enhanced Dashboard & Analytics



Windows 10 IoT



ThinkSmart Manager Mobile

THINKSMART MANAGER PLANS

SaaS

ThinkSmart Manager
BASIC

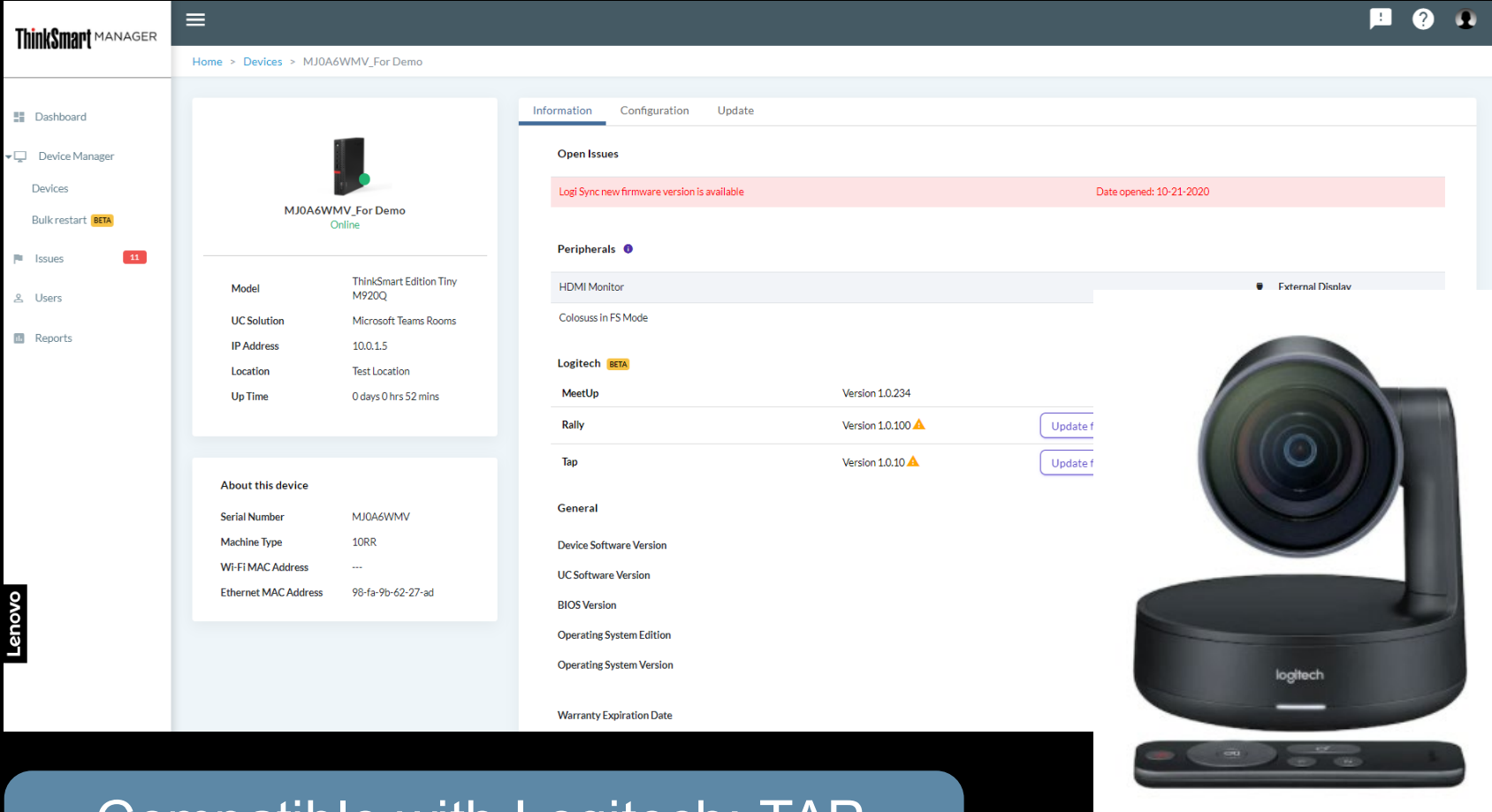
ThinkSmart Manager
PREMIUM

Can manage ThinkSmart Hub, ThinkSmart Hub 500, and ThinkSmart Edition Tiny	✓	✓
Can set up, update, and control ThinkSmart Cam and ThinkSmart Bar***	✓	✓
Can access ThinkSmart Cam app when this device is used without a ThinkSmart compute	✓	✓
See device information and configure ThinkSmart Manager updates	✓	✓
Perform bulk configuration management	✓	✓
Rotate BIOS, Windows, and Microsoft Teams passwords	✓	✓
Enable/disable Windows remote desktop functionality	✓	✓
See all the software that ThinkSmart devices are running all in one place	✓	✓
Use mobile app to see device status and register new devices	✓	✓
Perform bulk restarts		✓
Receive push notifications regarding devices via mobile app		✓
Integrate 3rd party software, Logitech Sync to manage MeetUp and Rally firmware		✓
Integrate 3rd party software Intel vPro® for BIOS-based <u>remote management</u>		✓
Integrate 3rd party software, ServiceNow® via API to automatically generate service tickets		✓
Access historical room meeting analytics via dashboard		✓



Logitech Sync Integration

- Ability for IT admin to:
 - Have single pane of glass between Lenovo ThinkSmart Manager and **Logitech Sync**
 - Update firmware on connected Logitech peripherals
 - See all TS Mgr and Logitech Sync issues in a consolidated listing



The screenshot displays the ThinkSmart Manager web interface. On the left, a sidebar contains navigation links: Dashboard, Device Manager, Devices, Bulk restart (BETA), Issues (11), Users, and Reports. The main content area is titled 'MJ0A6WMV_For Demo' and shows the device is 'Online'. Below this, a table lists device details: Model (ThinkSmart Edition Tiny M920Q), UC Solution (Microsoft Teams Rooms), IP Address (10.0.1.5), Location (Test Location), and Up Time (0 days 0 hrs 52 mins). An 'About this device' section provides hardware details: Serial Number (MJ0A6WMV), Machine Type (10RR), Wi-Fi MAC Address (---), and Ethernet MAC Address (98-fa-9b-62-27-ad). On the right, the 'Information' tab is active, showing 'Open Issues' with a message: 'Logi Sync new firmware version is available' (Date opened: 10-21-2020). Below this, the 'Peripherals' section lists connected devices: HDMI Monitor, Colosuss in FS Mode, and Logitech (BETA). The Logitech section shows three devices: MeetUp (Version 1.0.234), Rally (Version 1.0.100 with a warning icon and an 'Update f' button), and Tap (Version 1.0.10 with a warning icon and an 'Update f' button). A 'General' section lists system information like Device Software Version, UC Software Version, BIOS Version, Operating System Edition, Operating System Version, and Warranty Expiration Date. To the right of the interface is a large image of a Logitech Tap video conferencing camera and its base, with a Logitech Rally remote control in front of it.

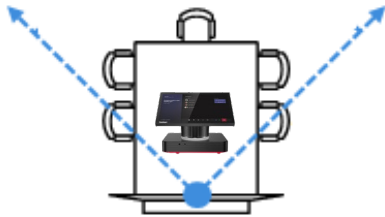
Compatible with Logitech: TAP, Meet-up, Rally, Swytch products.

UX: Lenovo offers solutions for all kinds of meeting spaces

*Personal Spaces /
VIP Office
Phone booth /
Remote working
Open space /
Shared Desk / IP
Phone*



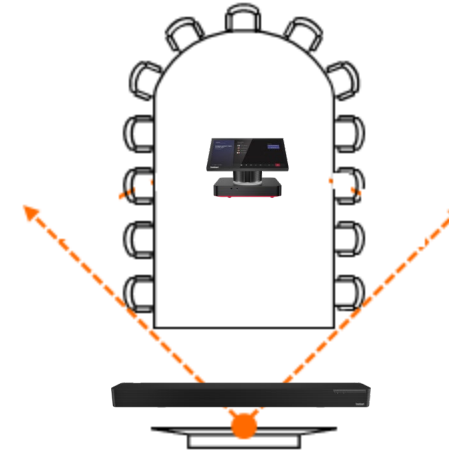
Small room



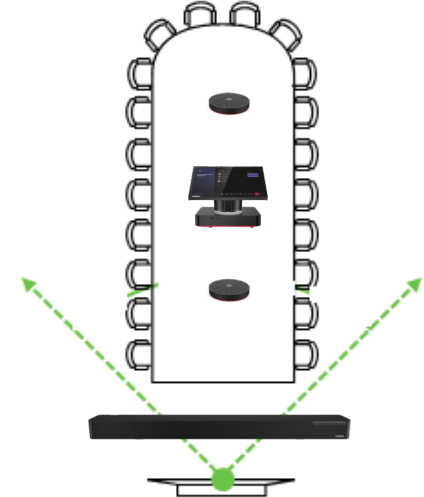
Huddle/Medium room



Large room



XL Meeting room



zoom



the modular - ThinkSmart Core



Availability by September

ThinkSmart Core

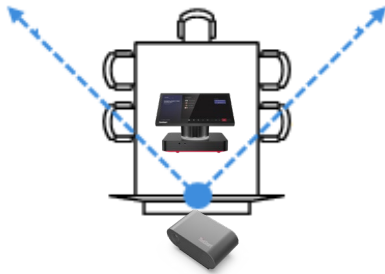


Our proposal for all kinds of meeting spaces

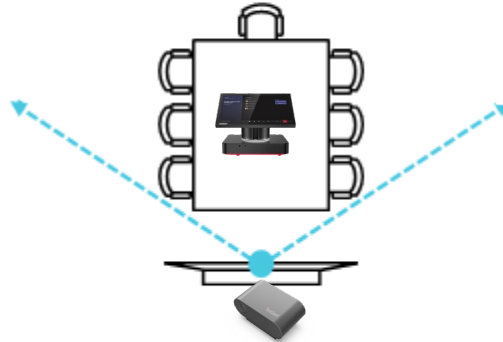
*Personal Spaces /
VIP Office
Phone booth /
Remote working
Open space /
Shared Desk / IP
Phone*



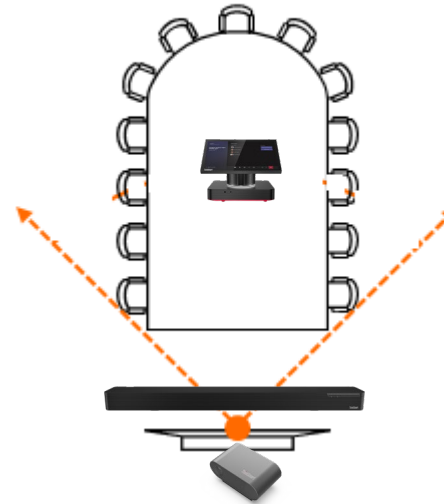
Small room



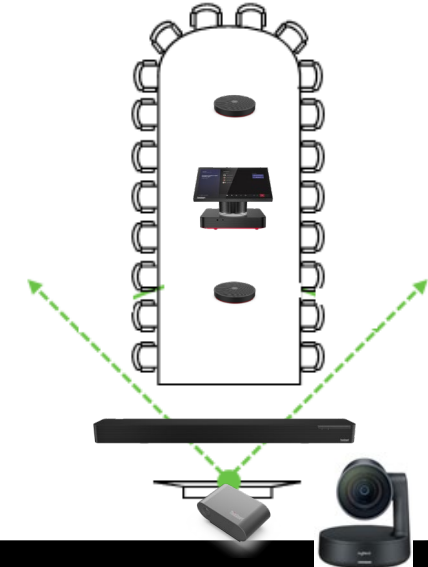
Huddle/Medium room



Large room



XL Meeting room



ThinkSmart View



**ThinkSmart Hub
ThinkSmart Cam**



**ThinkSmart Hub
ThinkSmart Cam**



**ThinkSmart Hub
ThinkSmart Cam
ThinkSmart Bar**




**ThinkSmart Hub
ThinkSmart Cam
ThinkSmart Bar XL**

Premier Support


A direct 24x7x365 line to our most elite technicians




Advanced technical support, 24x7x365, in more than 100 markets




Technical account managers for proactive relationship and escalation management




Comprehensive hardware and OEM software support



Priority on service delivery and repair parts



Single point of contact for simplified end-to-end case management



Lenovo Service Connect portal for customized reporting and product support



91%
of Premier Support customers indicate they would purchase again



88%
of customers indicate they would recommend Premier Support to a peer

Backed by end-to-end services and support

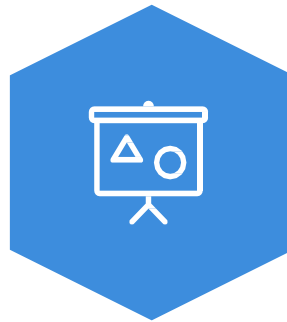
Smart Collaboration Professional Services



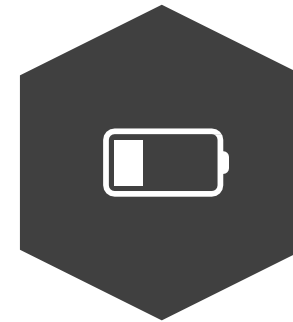
ASSESS



DEPLOY



TRAIN



MAINTAIN



ARP Services

- Logistics | Rollout | Shipping
- Training (MS Teams)
- Solution Design
- Integration| Installation
- Firmware updates
- On site testing
- Licensing
- SLA / Maintenance
- SPOC
- Finance solution (Leasing)
- Pilot Room & Testing Materials

IT's easy.



IT's easy.

TEAM



Jann Furrer
Digital Signage



Didier Lüscher
Digital Signage & Meeting Room



Raphael Jöhren
Digital Signage & Collaboration



Grégory Milius
Collaboration & Meeting Room



Rosete Ciotti
Meeting Room & Mounting

Solution Videos

ThinkSmart Cam Product Tour

<https://youtu.be/fghGLZUyr2g>

ThinkSmart Cam Video Guide

<https://youtu.be/VeSTMtIXMAs>

ThinkSmart Bar Product Tour

<https://youtu.be/LUC2iq03RoM>

ThinkSmart Bar Demo Video

<https://www.youtube.com/watch?v=BGB5abTBlow&t=8s>

ThinkSmart Hub Product Tour

<https://www.youtube.com/watch?v=LYoW9AWIX88>

ThinkSmart Hub how to install

<https://www.youtube.com/watch?v=OLWOsx1yWvE&app=desktop>

ThinkSmart View Product Tour
ThinkSmart View Teams Display

<https://youtu.be/Fpxud22iE0E>
<https://youtu.be/Fpxud22iE0E>

ThinkSmart Manager

<https://www.youtube.com/watch?v=Y000Z-YLGfc>



ThinkSmart Hub for Microsoft Teams Rooms

BECHTLE

Lenovo



ThinkSmart HUB



Built for Business

Be Part of IT.

Vielen Dank für Ihre Teilnahme.

Lenovo Schweiz
Christoph Wittlinger | Client Technologist
cwittlinger@lenovo.com

Grégory Milius | Channel Account Manager CH & A |
Bechtle Schweiz AG
Gregory.milius@bechtle.com