



Security



**Powerful security
solutions**



**Training and
education**



A secure *business*

Contents

Security: The Bechtle Way	4
The Core Areas	5
The 6 focus areas of our security division	6
Network Security	7
Application Security	9
Information Security	11
IT Governance, Risk & Compliance	12
End-user behaviour	13
End-point devices	15
Security: the process	17
Food for thought	18

Security at Bechtle

A critical data leak can have a catastrophic impact on an organisation. When we pair the complexity of increasing cyber threats, with hybrid working environments, the data within your business is as vulnerable as it has ever been, when unprotected that is.

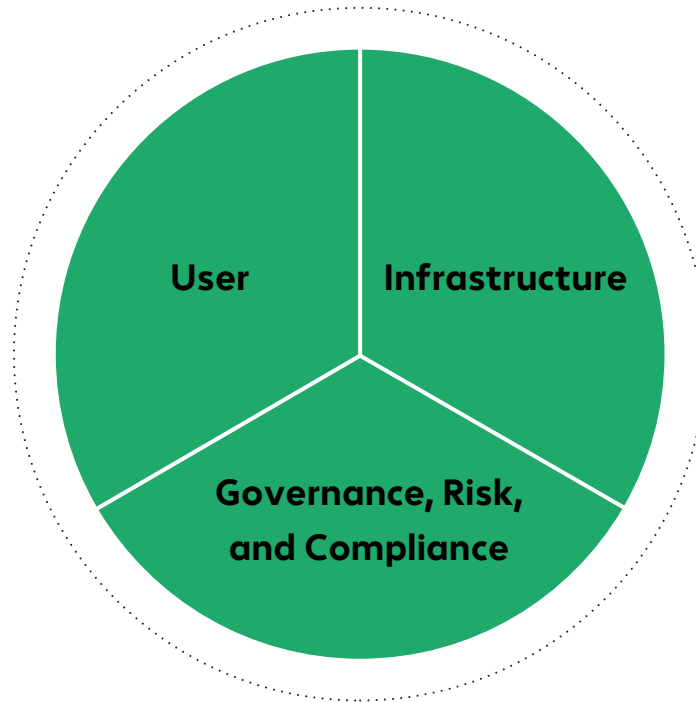
Alongside technology solutions, at the core of a strong security strategy is the training and education of your *team* around the risks out there, and the right ways to protect your business day-to-day.

- Do you know the true impact on your business if there was a data breach?
- How long would it take your business to be up and running after a complete outage?
- Do your team know how to spot malicious activity and is there a process to follow if they do?

These are all questions we would be asking when working with you on your security strategy.



The Core Areas



At Bechtle, we believe that people, technology and processes are key to securing any business, which is why we focus our services and solutions on three core areas:

- Protecting your organisations users and endpoints and providing the right level of education and awareness
- Protecting critical systems and assets whilst maintaining strong visibility of your network
- Your organisations approach to best practice and managing risk in line with industry and government regulations



The 6 focus areas of our security division

The topic of security can be overwhelming, often a challenge bigger than all of us alone.

We believe that through our diverse security portfolio, we can deliver seamless end-to-end solutions that support your business.



Network Security



Application Security



Information Security



IT Governance, Risk,
and Compliance



End-user behaviour



End-point devices

Network Security

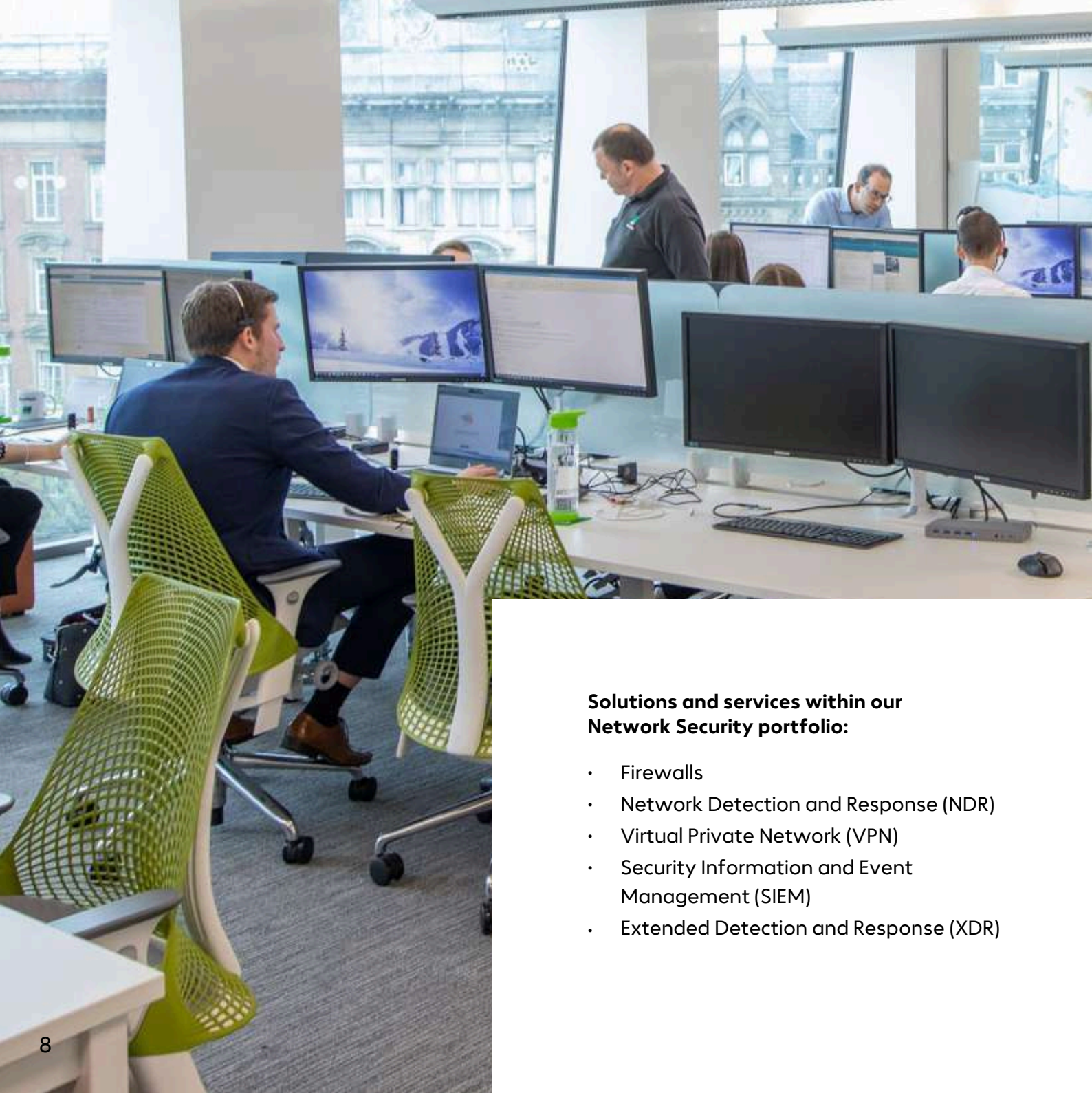


Do you have a clear picture of how secure your network is? Are you aware of potential threats?

Your network is your first line of defence.

An essential foundation for any secure business.

Protecting your network from unauthorised access, data breaches, and other cyber threats is unfortunately a non-negotiable today. With the right tools in place you'll be able to better detect network-based threats and respond to incidents efficiently.



**Solutions and services within our
Network Security portfolio:**

- Firewalls
- Network Detection and Response (NDR)
- Virtual Private Network (VPN)
- Security Information and Event Management (SIEM)
- Extended Detection and Response (XDR)

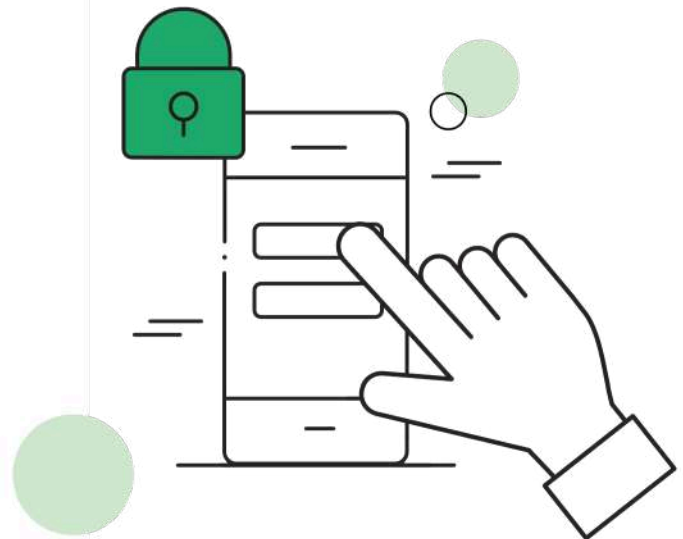
Application Security

How secure and protected are the applications within your business? Are you notified of any vulnerabilities detected within software being consumed by the business?

From who has access, to how people login, through to protecting your network from malicious downloads, monitoring the data entering and leaving the organisation is key. With more teams working in a hybrid way, the security tools that you have in place to support the software and applications used by your employees must be robust.

When it comes to application security, here is where we can help:

- Identity and Access Management
- Multi-Factor Authentication (MFA)
- Privilege Access Management (PAM)
- Email Security
- Web Gateway
- Patch Management





Across Europe, the average cost of a **cyber-attack** is typically estimated at **over €4 million** per incident.

Sources: Cybersecurity statistics, IBM cost of a data breach report 2025.

Information Security

How much data does your business process in a given day, week, month, or year? How much of that data is sensitive, and how confident are you that this data is secure in your network?

As an organisation you are legally obliged to protect customer and user data from being lost or stolen and ending up in the wrong hands.

- Data loss prevention (DLP)
- Threat intelligence
- Backup
- Disaster recovery
- Data encryption
- Secure file transfer



IT Governance, Risk and Compliance

IGRC is increasingly more complex, but when done effectively, can provide a structured approach to aligning IT with business objectives. GRC helps companies effectively manage IT and Security Risks, whilst meeting compliance requirements.

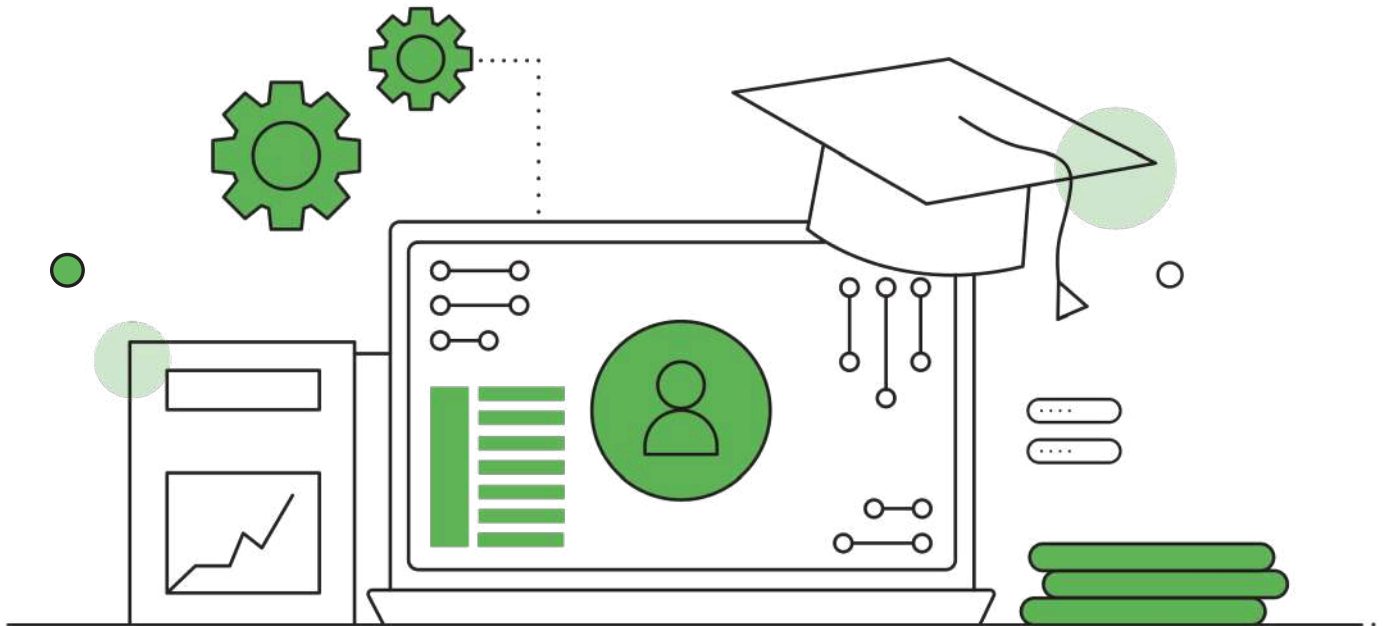
Are you as an organisation adhering to industry standards or frameworks and managing this effectively alongside change within your business?

Here's where we can help:

- Cyber Essentials (CE+)
- ISO 27001
- PCI DSS
- Penetration Testing
- IT Health Checks
- NIST Methodology



End-user Behaviour



Having solutions in place is a good foundation, but another key factor in business security is training and the education of employees. Do they know how to spot malicious activity? Is there a clear process to follow if they do? Do they know what to do if it's too late and there has been a breach?

If not, our team are here to help with these services:

- Security Awareness Training
- Behaviour Analytics (AI)
- Phishing Detection

99

The human element is the most common threat vector; it was the root cause of 74% of data breaches in Verizon's 2025 report.

End-point Devices

So, we've talked about your network, your applications, and your employees, but what about the devices in your business?

Again, with the nature of hybrid working, employees are accessing business data from multiple locations throughout the network, creating all the more need for strong device security.

Here are some of the ways we can help secure your business devices:

- Anti-Virus
- Managed Detection and Response (MDR)
- End-point Detection and Response (EDR)
- Asset Management



99

The biggest cyber security threat is **human error**, accounting for over **80% of incidents**.

Security: The Process



At Bechtle we can support you with not only solutions and services tailored to your business but our team of experts are on hand to guide you, through their extensive background and consultative approach we will look at your organisation in it's entirety and ensure there are no gaps left exposed.

Many people see security as finding quick fixes, putting plasters over the cuts.

At Bechtle, it's all about helping our customers build sustainable strategies to keep their network, applications, and devices secure and safe.

We'll also work with your team to provide an ongoing strategy that supports business change.



Food for thought...

Building a security plan for your business is not a one-time fix. This is an area of your business that should constantly be under scrutiny, being improved, and always something that is prioritised.

After all, "the average cost of a data breach to UK businesses in 2023 was just under £5 million." Many organisations reviewing their current approach to security don't know where to start. At Bechtle, we can provide guidance and reassurance to ensure you are utilising your security investments to their maximum capability.



Ireland

Ground Floor, Corrig
Court, Corrig Rd,
Sandyford, Dublin,
D18 C6K1

E: sales.direct-ie@bechtle.com

T: [\(01\) 426 6700](tel:(01)4266700)

W: www.bechtler.com//ie