

ThinkStation P360 Ultra

Redefining the Power of Small

Lenovo



Introducing the ThinkStation P360 Ultra, our brand-new workstation featuring a revolutionary form factor that is redefining the power of small. With the latest Intel® Core™ processors, NVIDIA® professional graphics, super-fast memory, and cutting-edge storage, this workstation breaks new ground by delivering superior performance and flexibility in a chassis less than four liters in total volume.

Processor:

5.2GHz
16 Cores

12th Gen Intel Core i3, i5, i7, i9
8 P-cores, 8 E-cores

Graphics:

NVIDIA RTX
A5000 mobile

Choice of discrete or
integrated graphics

Memory:

128GB
DDR5

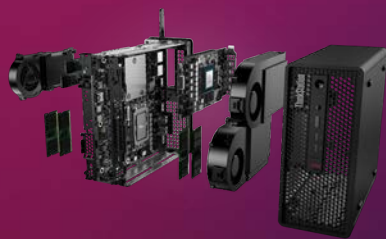
4000MHz
ECC or non-ECC

Storage:

8TB M.2
PCIe Gen4

Up to two 4TB NVMe
Performance SSDs

Features



New Workstation Form Factor

Full performance in a new 3.9L compact form factor



3 DisplayPort™ standard

Offering support for up to 8 displays



Legendary Reliability

Tested to 10 military grade requirements and >200 quality checks



ISV Certifications

Certified by leading industry software application vendors for seamless application use

Lenovo ThinkStation P360 Ultra Product Specifications[^]

Performance

Processor

12th Gen Intel® Core™ i3, i5, i7, i9
(up to 16 cores, up to 5.2GHz¹)

Chipset

Intel W680

Graphics

Discrete:

Up to NVIDIA RTX A5000 mobile
16GB VRAM

NVIDIA RTX A2000 12GB VRAM

Processor Integrated:

Intel UHD Graphics 770

Total Memory

Up to 128GB DDR5, 4000MHz[^]

Memory DIMM Capacity

16GB / 32GB ECC²

8GB / 16GB / 32GB non-ECC

4 SoDIMM Slots

Storage Type Capacity³

M.2 PCIe NVMe SSD up to 4TB

2.5" SATA HDD up to 1TB[^]

Total Storage

Up to 3 total drives

Max M.2 = 2 (8TB)

Max 2.5" = 1 (1TB)

RAID

M.2 = 0/1

Power Supply

170W, 230W, 300W 89% efficient

Design

Dimensions (WxDxH)

(mm): 87 x 223 x 202

(inches): 3.4 x 8.7 x 7.9

Weight

Starting at: 3.96lbs (1.8kg)

Connectivity

Front Ports

(1) USB 3.2 Gen 2 Type-A*

(2) USB 3.2 Gen 2 Thunderbolt™ 4
Type-C*

(1) Audio Combo Jack

Rear Ports

(4) USB 3.2 Gen 2 Type-A*

(3) DisplayPort™

(1) 2.5GbE

(1) 1GbE

WLAN

PCIe module: Intel Wi-Fi 6 AX201 2*2ax
+ BT5.0 Non-vPro

M.2 Module: Intel Wi-Fi 6E AX211 2*2ax
(6GHz) + BT5.2n vPro

Expansion Slots

(1) PCIe 4.0 x 16

(1) PCIe 3.0 x 4

Intel I350-T2 Dual Ports Gigabit
Ethernet Adapter⁴

Expansion Options

Serial/DP/HDMI/TypeC-DP/
USA/LAN/VGA⁴

Thunderbolt™ 4

Smarter
technology
for all

Lenovo

¹ Max turbo frequency 5.2GHz, max performance-core frequency 5.1GHz, efficient-core base frequency 2.4GHz

² ECC available Fall 2022

³ Any combination of storage to equal maximum storage drives

⁴ Optional, additional hardware may be required

[^] For a full list of configuration details, specifications, and any limitations please visit: <https://psref.lenovo.com>

* USB port transfer speeds are approximate and depend on many factors, such as processing capability of host/peripheral devices, file attributes, system configuration and operating environments; actual speeds will vary and may be less than expected.

Lenovo Options & Accessories



ThinkVision P32p-20



2TB Performance PCIe Gen4
NVMe OPAL2 M.2 2280 SSD
PN: 4XB1D04758



NVIDIA RTX™ A2000 12GB
4xDP Graphics Card
PN: 4X61J52232

For a full list of accessories
and options, please visit:
accsmartfind.lenovo.com

For more details on ThinkStation
and ThinkPad, please visit:
lenovo.com/thinkworkstations

Visit us on social media:
#lenovoworkstations



May 2022 ©Lenovo. All rights reserved. Lenovo is not responsible for photographic or typographic errors. Lenovo makes no representation or warranty regarding third-party products or services. LENOVO, ThinkStation, and ThinkPad are trademarks of Lenovo.

Lenovo ThinkStation P360 Ultra General Specifications[^]

Software

Operating System

Windows 11 Pro
Windows 11 Home
Windows 10 Pro (preinstalled through
downgrade rights in Windows 11 Pro)
Ubuntu® Linux^{®1}
Red Hat® Enterprise Linux® (certified)

Windows Preloads

Lenovo Commercial Vantage

ISV Certifications²

Including AVID®, Altair®,
Autodesk®, ANSYS®, Bentley®,
Dassault®, Nemetschek®, PTC®,
Siemens®, Barco®, McKesson®

For a complete list of ISV certifications visit
<http://www.thinkworkstations.com/isv-certifications/>

Security

ThinkShield

TPM 2.0
Self-healing BIOS
Power On Password
UEFI Secure Boot
Kensington Lock Slot

Sustainability

Certifications

ENERGY STAR®
EPEAT®³ Gold
RoHS Compliant
TCO 9.0

Recommended Services

Premier Support

Bypass phone menus and scripted troubleshooting to access advanced-level technicians with the expertise needed to quickly diagnose and solve problems.

Warranty Upgrades

Onsite Service maximizes PC uptime and productivity by providing convenient, fast repair service at your place. In addition, with Tech Install CRU service the installation of all internal Customer Replaceable Unit (CRU) parts will be done on your behalf by a trained technician.⁴

Accidental Damage Protection

Protect your investment from operational or structural damage caused by common accidents like drops, spills, or electrical surges. This protection plan helps with predictable budgeting, minimizes unexpected repair costs and provides significant savings relative to the cost of non-covered repairs.⁴

1 Select Versions Available Via Preload

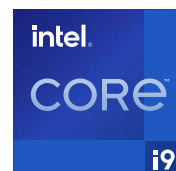
2 Available on select models

3 Certification Available on Select Models; EPEAT registered where applicable. EPEAT registration varies by country. See www.epeat.net for registration status by country

4 Up to 5 years total duration

[^] For a full list of configuration details please visit:
<https://psref.lenovo.com>

NVIDIA is a trademark and/or registered trademark of NVIDIA Corporation in the U.S. and other countries. Intel, Core and Iris are trademarks of Intel Corporation or its subsidiaries. Linux is the registered trademark of Linus Torvalds in the U.S. and other countries. Ubuntu is a registered trademark of Canonical Ltd. Microsoft and Windows are registered trademarks of Microsoft Corporation. Other company, product, and service names may be trademarks or service marks of others.



Lenovo