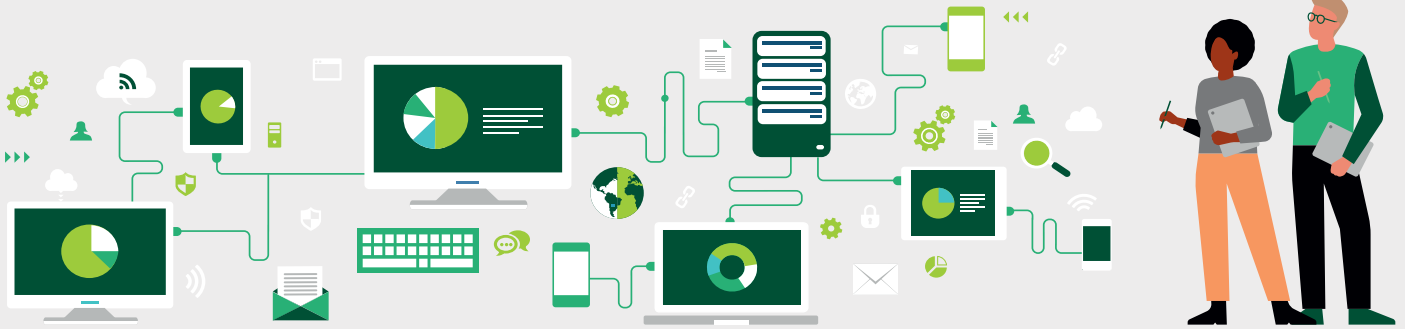




with



## Bechtle Smart Digital Experience.

*Transparency into your digital infrastructure.*

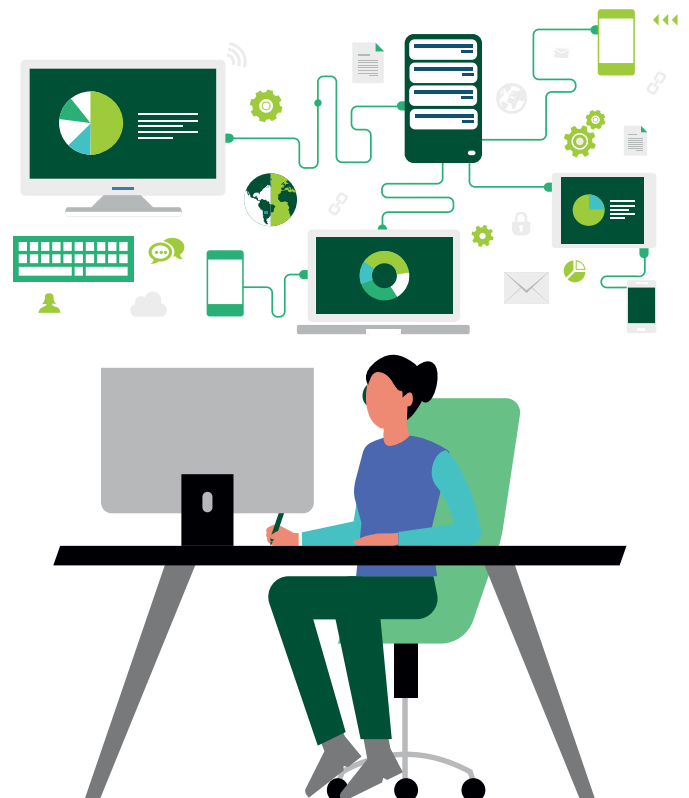
**Maximum control, minimum downtime.**

In our increasingly networked world, transparency into your digital infrastructure is the key to success. Bechtle Smart Digital Experience gives you a comprehensive insight into the performance of your networks, apps and cloud services.

Based on the powerful ThousandEyes monitoring platform, Bechtle offers a tailored service from set up to operation.

### Your benefits at a glance:

- End-to-end transparency: Keep an eye on the entire supply chain – From the data centre to the end user.
- Fast troubleshooting: Identify bottlenecks and downtimes before they impact your business.
- Optimum user experience: Recognise performance issues in real time and boost customer and employee satisfaction.
- Proactive issue detection: Use AI-driven analyses to predict and proactively resolve issues.
- Flexible provisioning: Fully managed by Bechtle.





with



## Benefit from a selection of six standardised tests:

### Pageload tests for a customer-specified URL using Cloud Agents:

A pageload test for a URL specified by you using a Cloud Agent gives a detailed insight into the performance and availability of a website in a specific geographical region or cloud location.

### Pageload tests for a customer-specified URL using Enterprise Agents:

Pageload tests for a URL specified by you using an Enterprise Agent offers a precise and internal perspective on the performance of a website or web application from within your company's network.

### MS Teams Tests certified by Microsoft using Enterprise Agents:

The complete Teams user experience—including audio, video and chat services—is evaluated using an Enterprise Agent. These tests help to identify and resolve performance problems early to ensure an optimum Teams experience.

### Webex Tests certified by Cisco using Enterprise Agents:

The complete Webex user experience—including audio, video and chat services—is evaluated using an Enterprise Agent. These tests help to identify and resolve performance problems early to ensure an optimum Webex experience.

### Site-to-Site (Agent-to-Agent) using Enterprise Agents:

A Bechtle Smart Digital Experience Site-to-Site test (Agent-to-Agent) using Enterprise Agents gives you an in-depth look at network connectivity and performance between two locations within your corporate network.

### M365 certified by Microsoft using Enterprise Agents:

A Bechtle Digital Smart Experience M365 Test (Microsoft 365), certified by Microsoft, gives your businesses in-depth insights into the performance and availability of Microsoft 365 services such as Exchange Online, SharePoint, OneDrive and Microsoft Teams.

**Additional tests can be flexibly implemented, tailored to your specific requirements in close collaboration with Bechtle.**

## What are you waiting for!

Benefit from maximum transparency and availability for your digital infrastructure with Bechtle and ThousandEyes.



**Get in touch. We're happy to help.**

**Harald Rest**

harald.rest@bechtle.com

**Daniel Hoffmann**

d.hoffmann@bechtle.com

**Kai Welsch**

kai.welsch@bechtle.com

Service	Price per day	Monthly total
Pageload tests for a customer-specified URL using Cloud Agents	€9.81	€303.96
Pageload tests for a customer-specified URL using Enterprise Agents	€1.27	€39.30
MS Teams Tests certified by Microsoft using Enterprise Agents	€8.38	€259.74
Webex Tests certified by Cisco using Enterprise Agents	€2.69	€83.52
Site-to-Site (Agent-to-Agent) using Enterprise Agents	€1.27	€39.30
M365 certified by Microsoft using Enterprise Agents	€12.19	€377.88

Pay per Use, contracts can be cancelled on a monthly basis.