

# Maximise your on-premises investments with hybrid cloud

## How to prepare your data centre for the future

Nowadays, people throw around the term cloud computing at any opportunity. It is often offered to you as a total package in which you can securely accommodate your applications and workloads. A reduction in your operational expenses and increased efficiency are the logical result. Of course it is not that simple. It is more a case of enabling you to accommodate your data and applications in the most suitable format for staff so that they can work anytime and anywhere, avoiding downtime as much as possible. After all, that is the only way to create maximum business value.

This is precisely what you can achieve with a hybrid cloud architecture. However, the road to get there is often fraught with challenges and implementation is not always simple. The complexity of IT has only increased in recent years, making the manageability of a cloud environment increasingly complex. In collaboration with HPE, Bechtle offers you a strong hybrid cloud solution that supports you on your hybrid cloud journey from strategy to management. In this whitepaper, you can read how we can help you set up your Future Ready Data Centre.

In this guide, you will discover:

- The best solution for your apps and workloads
- Everything about your Future Ready Data Centre
- Your customer journey



# The best solution for your apps and workloads...

Because your workloads and applications make different demands on their environment, it is natural to accommodate your most important assets in the most suitable format. Then they form the foundation of your organisation's daily operations. But what are the best and most suitable destinations for your applications and workloads to achieve the desired business objectives?

One potential tactic to achieve the right format for your workloads is to implement a hybrid cloud strategy. A hybrid cloud is a cloud computing environment that uses a mix of on-premises, private and public cloud services that also ensures these platforms are interconnected. This usually means connecting an on-premises data centre to a public cloud. Other private assets, such as edge devices or other clouds, can be included in the connection.

In a hybrid cloud model, you can implement your workload in both private IT environments as well as public clouds, switching between the two as your computing requirements change. This offers your organisation increased flexibility and more options for using data.

## ...supported by a Future Ready Data Centre

You need a suitable IT infrastructure to support your hybrid cloud. The infrastructure that supports your workloads needs a scale, performativity and availability that can meet the highest demands. Furthermore, you want a cost-effective option and a clear TCO.

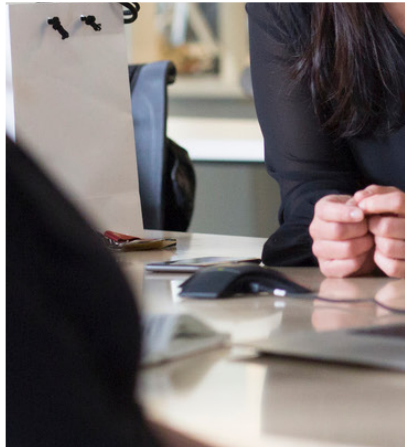
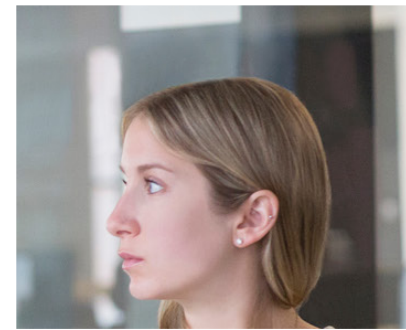
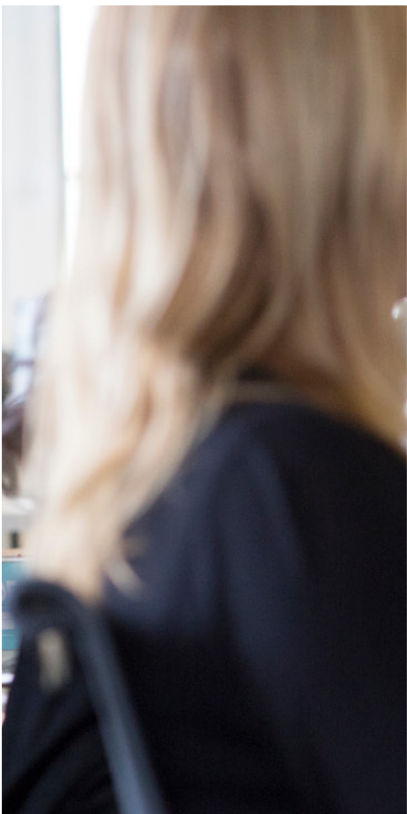
With our Future Ready Data Centre, together with HPE, we help you to gain insight into migration to the cloud. This means you can easily implement your most sensitive workloads in an on-premises cloud and host less critical workloads with an external public cloud provider. This approach enables you to get the most out of both private as well as public cloud models.

Bechtle cloud unlocks all known cloud services in one platform and, in

combination with HPE, offers a consistent, professional cloud service. That way, you benefit from hitch-free access to native cloud services for all your migrated applications and thanks to the available cloud services, you can maximise your existing on-premises investments. It is also possible to automate underlying infrastructure activities and move workloads according to your requirements.

HPE's tools and our processes make your apps and data agile, eliminating complexity and silos and stimulating speed and flexibility at the same time. In short, we help you tackle non-cloud native apps that slow things down and put you on the path to a uniform, modern cloud strategy.





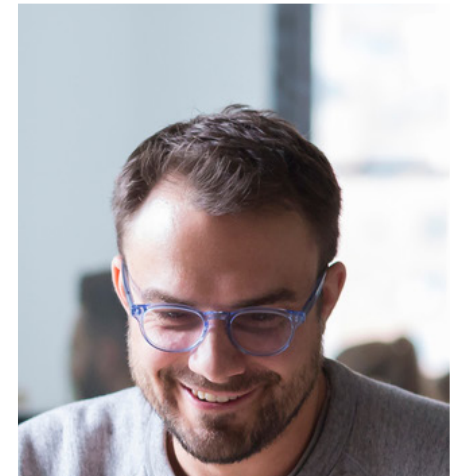
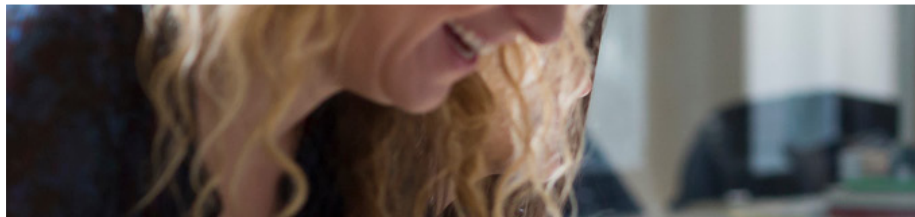
## Your trusted IT partner in a hybrid world

As an IT partner, in collaboration with HPE, we look at the big picture. We provide advice on more complex IT challenges such as setting up your Future Ready Data Centre. As you want to be able to control your IT, and you have asked yourself how you can respond faster, safer and most cost-efficiently to business changes, a modern data centre forms the perfect bridge to digital transformation. When you choose a Future Ready Data Centre, you are preparing for the future with a modern data centre, set up according to your wishes and managed in a way that optimally unburdens you.

In other words, we are your trusted IT partner in a hybrid world. Our team of experts always look for a suitable solution, whether the challenge is a technical one or located in your processes or the future exploitation of workloads. We are only satisfied when you are!

# Start with the Bechtle Future Ready Data Centre now

The Future Ready Data Centre responds to the problems IT teams have with adoption and the speed at which developments occur. The proposition is made up of reusable building blocks, flexibility and scalability. The solutions for customer X may be vastly different to those for customer Y. It all depends on what you want as an organisation. Together, we determine your needs and wishes by going through an extensive customer journey. We determine the strategy together and guide you through implementation and beyond. We aim for nothing less than a long-term partnership.



# How can a hybrid data centre help your sector?

A hybrid data centre must offer the perfect balance between maximum flexibility, cost-efficiency, availability, automation and data security. That is the only way IT can deliver concrete added value for your organisation and optimise your business processes. A hybrid data centre is therefore the bridge

between your business and the digital transformation. But what exactly does it offer your sector? Find out in three specific examples.

## Healthcare

The digital transformation process offers great possibilities to accelerate the improvement of patient care, whether you need to relieve administrative tasks, accelerate diagnostic procedures or secure telehealth or patient data. A hybrid data centre offers the perfect starting point to respond quickly and flexibly to new processes.

## Architectural firm

Collaborating on large files with customers, partners and colleagues is as easy as pie with a hybrid data centre. After all, the IT resources are available as needed and access to joint resource pools is simpler and safer than ever.

## Multinational

Respond quickly and flexibly to new demands, optimise processes or achieve data-based business models. With a hybrid data centre you combine it all. Bechtel sets immense store by the hybrid data centre, with benefits for you at technical, commercial and regulatory levels.

# Find out about your customer journey

1. Strategy

Tailored advice can only succeed if we start by scrutinising your organisation's needs and wishes together. We always approach this based on an assessment, because every organisation is unique.
2. Analysis and design

We follow up on the assessment by analysing the software for its current and future performance, security and applications. In collaboration with our project team, we then go on to convert that analysis into a new, cloud-ready hybrid infrastructure.
3. Preparations and plan

Once we have reached an agreement about the most suitable IT solution, we start establishing the parameters. That includes costs, financing (CapEx/OpEx), as a Service, infrastructure, manufacturer selection and so much more.
4. Adoption and implementation

Once we have done all the brainwork, we start setting up the actual hybrid cloud infrastructure and automating delivery. To avoid disrupting your business processes, we create a migration roadmap to ensure the new IT solutions and services are seamlessly aligned with your current processes.
5. Direction

We use machine learning and best practices to provide a secure standardised environment that always meets the requirements.
6. Management

After all this, we don't leave you to your fate! Optimising and managing workloads and infrastructure is a never-ending story. Our experts support you by providing daily management, implementing your new hybrid infrastructure and adjusting it where necessary. Furthermore, they help you optimise some applications for the cloud.





## Want to know more about the Future Ready Data Centre solution?

Our experts Wesley Wienen and Jeroen Huylebroeck are both specialised in cloud and data centres.

They will be happy to help with non-binding advice.

Contact us



Wesley Wienen  
Datacenter Consultant  
[wesley.wienen@bechtle.com](mailto:wesley.wienen@bechtle.com)



Jeroen Huylebroeck  
Cloud Consultant  
[jeroen.huylebroeck@bechtle.com](mailto:jeroen.huylebroeck@bechtle.com)



**Hewlett Packard**  
Enterprise