



## iiControl CONTENT AND DEVICE MANAGEMENT SYSTEM

iiControl is a centralized platform for seamless device management. It lets you monitor device status, send commands, perform remote control, manage content, and update software with ease. From scheduling power settings to casting screens or installing apps remotely, iiControl streamlines operations across multiple devices. With real-time monitoring, robust analytics, and user-friendly tools, iiControl enhances efficiency for businesses and organizations.



## iiShare SIMPLIFY COLLABORATION AND DEVICE MANAGEMENT

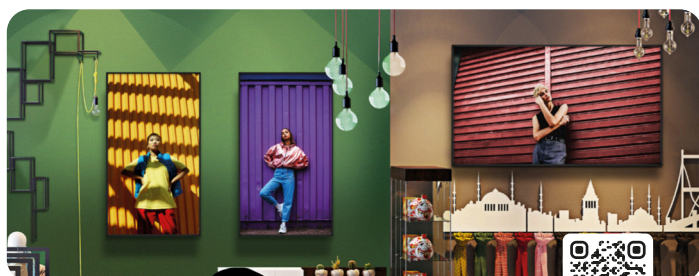
iiShare is a versatile wireless screen-casting solution designed for seamless content sharing, display, and collaboration across devices. Perfect for meetings, education, entertainment, and more, it supports multi-platform casting, 4K resolution, NFC, reverse control, and cloud-based remote casting. Compatible with Windows, Mac, iOS, Android, and hardware like SC1, iiShare offers intuitive features like gallery mode, floating windows, and BYOM (Bring Your Own Meeting) for ultimate connectivity and productivity.



## iiWare COLLABORATION AND CONNECTIVITY SOLUTION

iiWare is iiyama's free and out of the box solution featuring apps facilitating easy collaboration and connection with different devices like: iiyama Share, Note, Browser, Cloud Drives, WPS Office and EShare. The latest version even offers Google EDLA. With User Profile Login you get access to your online class slides, your own app shortcuts and widgets and even your cloud drives on homepage with a simple login. Your account and all privacy data will be cleared when you log out.

For more information, please visit our landing page.



## iiSignage<sup>2</sup> CONTENT MANAGEMENT SYSTEM

Take full control of your iiyama LFD displays with iiSignage<sup>2</sup> (Content Management System), a smart and secure CMS hosted in the Netherlands. Easily upload media, create dynamic programs, schedule content, and share it across individual or grouped displays. Monitor performance with real-time screenshots and automated updates. Perfect for effortless, impactful messaging tailored to any audience. Discover how iiSignage<sup>2</sup> simplifies your digital signage in just 4 steps!

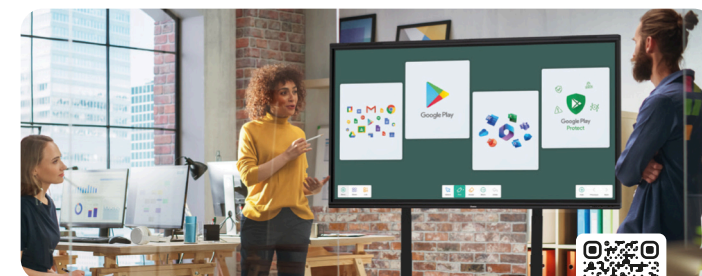
For more information, please visit our landing page.



## EShare EFFORTLESS COLLABORATION FOR WORK AND EDUCATION

EShare is a wireless collaboration app pre-installed on select iiyama displays, perfect for effortless and seamless sharing, streaming, and mirroring. Connect your device in three simple steps to transform meetings or lessons into interactive sessions. Share screens, use two-way touch, annotate, or stream up to 9 devices at once. Compatible with Android, iOS, macOS, Windows.

For more information, please visit our landing page.



## Google EDLA ENTERPRISE DEVICE LICENSING AGREEMENT

Google EDLA-certified iiyama displays offer seamless access to Google apps, accounts, and tools, integrating the Google ecosystem with Microsoft 365 for enhanced productivity and collaboration. The latest version even offers Google EDLA. With Google Mobile Services, install apps directly via the Play Store, including educational and productivity tools. Google Play Protect ensures app security, safeguarding data and devices, making these displays ideal for education and enterprise environments.

For more information, please visit our landing page.