



//Inventory2go

IT asset transparency –
Proper IT planning and
strategic decisions.

powered by



Further information:
[bechtle.ch](https://www.bechtle.ch)

GAIN A COMPREHENSIVE INSIGHT INTO YOUR IT LANDSCAPE WITH OUR INVENTORY2GO SERVICE.

We provide you with a comprehensive inventory to visualise your actual IT infrastructure. Our main goal is to transform your data so that you can successfully manage your IT initiatives. We help you identify your data and consolidate it into one central platform. The consolida-

ted results are enriched with essential market data, normalised and categorised through the comprehensive technology catalogue. This gives you unprecedented information about your IT asset portfolio.

71 % of companies report that data problems are affecting the effectiveness of their IT asset management. As a result, 40% of business initiatives fail due to poor data quality or incomplete CMD.

Inventory Challenges:

These common data quality and completeness issues affect the success of many important IT initiatives.



missing assets



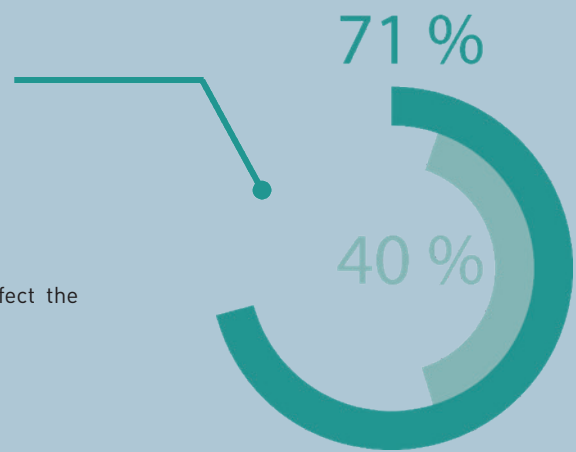
duplicated assets



incomplete assets



orphaned assets



INVENTORY2GO PROVIDES YOU WITH A COMPREHENSIVE REPRESENTATION OF YOUR ACTUAL IT INFRASTRUCTURE.

Our main goal is to transform your data so that you can successfully manage your IT initiatives. We help you consolidate the inventoried data into one central platform. The process normalises your data, removes duplicates and identifies vulnerabilities. The consolidated

results are enriched with essential market data, normalised and categorised through the comprehensive technology catalogue. This gives you unprecedented information about your portfolio.

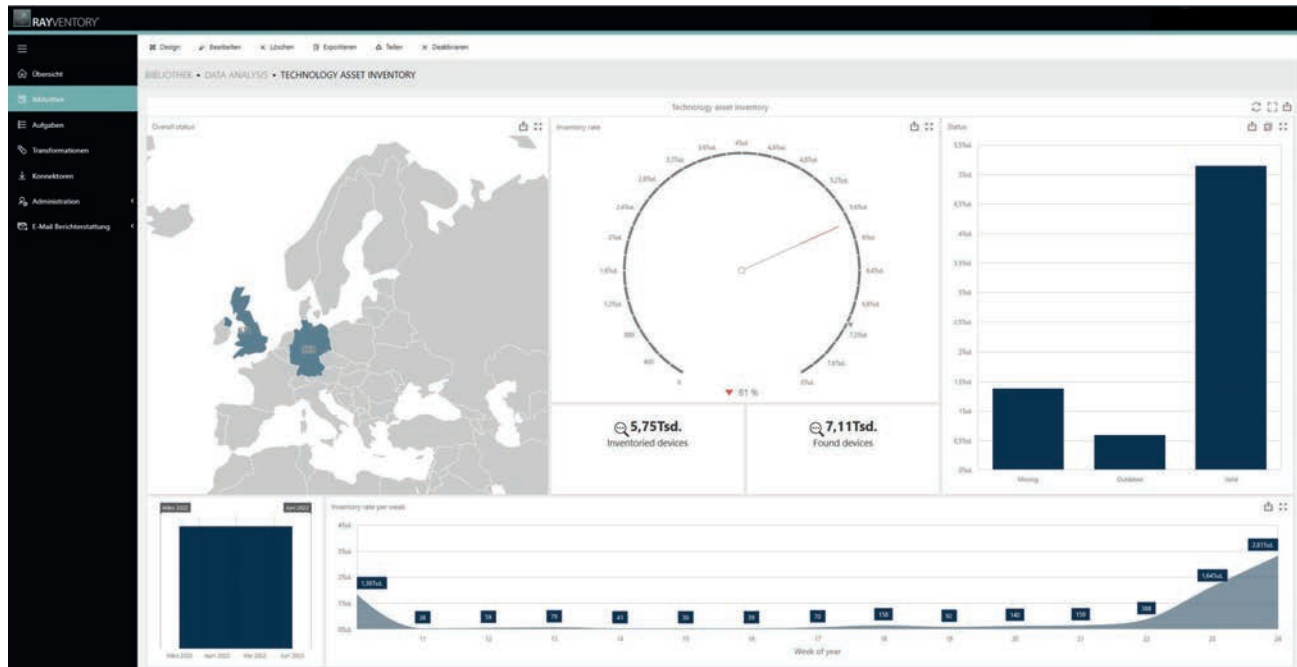
Your strong IT partner.
Today and tomorrow.



Discovery & Inventory.

You'll always be optimally prepared with hardware discovery and software inventory.

With our agent-based and agentless inventory methods, you'll gain an insight and transparency into your hardware and software audits for added peace of mind.



Three steps to full transparency.

1. Data collection.



2. Consolidation, normalisation and enrichment.



3. Dashboard and reports.



With the help of flexible inventory technologies, RayVentory enables both centralised and decentralised inventory of your IT infrastructure.

Your assets are then normalised and enriched with additional vulnerability, support, data attribute and version information from the technology catalogue.

Inventory2go visualises your data for different interest groups in numerous dashboards and reports for different interest groups.

Your strong IT partner.
Today and tomorrow.



Unified Data Platform.

Our powerful technologies deliver an automated end-to-end process. Unified Data Platform combines full visibility into your IT, comprehensive data enrichment and transformation in a single solution. The result? Across-the-board transparency coupled with a high-quality foundation of IT asset information.

YOUR BENEFITS AT A GLANCE.



AUTOMATED PRODUCT DETECTION THANKS TO ADVANCED AI TECHNOLOGY.

With our comprehensive technology catalogue, we normalise, categorise and enrich your dataset with essential information. This gives you insights that are not possible with traditional solutions.



INTELLIGENT ETL TECHNOLOGY AS A FOUNDATION FOR ESSENTIAL KPIS.

Our advanced IT visibility and data management solution captures and transforms your data to provide you with detailed reporting on key KPIs.



DATA NORMALISATION.

Gain new business insights by normalising your data.

Constant technological change requires continuous action to capture and store relevant IT data. Normalise and enrich your data fully automatically to give it more value.



END OF LIFE & END OF SUPPORT.

Optimise & proactively protect software portfolio.

Missing information about EOL and EOS can quickly lead to threatening situations. Avoid this with fully automated EOL & EOS management.



VULNERABILITY MANAGEMENT.

Improve your IT security with vulnerability management.

Protect your IT landscape from cyber attacks and prioritise measures to improve your IT security. Identify vulnerable software and act on ad hoc measures.



PORTFOLIO OPTIMISATION.

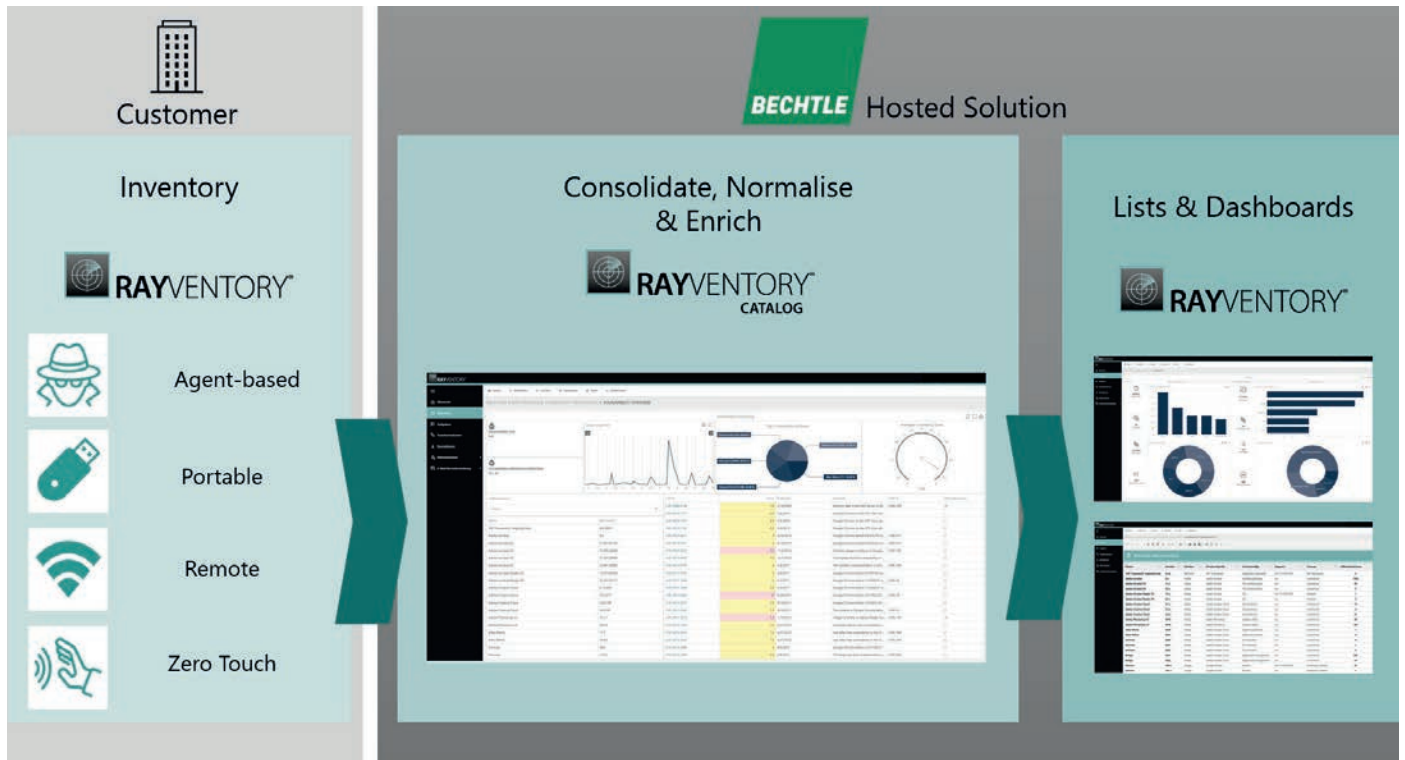
Save licence costs through optimisation.

We determine a concrete recommendation for action regarding the clean-up of your software landscape, taking into account your software strategy.

Your strong IT partner.
Today and tomorrow.

BECHTLE

Simplicity, security and innovation all rolled into one.



Why choose Bechtle.

A leading IT service provider in Switzerland, Bechtle Schweiz AG is your go-to partner for all things IT—from consulting to infrastructure, from services to software, on the ground and in the cloud. Trusted by small to large enterprises and public institutions,

Our offering spans the entire plan-build-run lifecycle of corporate IT, backed by top-level vendor certifications.

Why Raynet.

As a global software vendor with market-leading solutions and complementary managed services, we make successful end-to-end management of IT projects and operations possible.

Following the mission “Discover to Manage”, our vision is that all companies worldwide achieve transparency and security as well as the optimisation of their IT investments by using our technologies.

Bechtle Schweiz AG

Phone +41 848 820 420

info.ch@bechtle.com | bechtle.ch

Basel | Bern | Mägenwil | Morges | Petit-Lancy | Pratteln | Rotkreuz | St.Gallen

Your strong IT partner.
Today and tomorrow.

