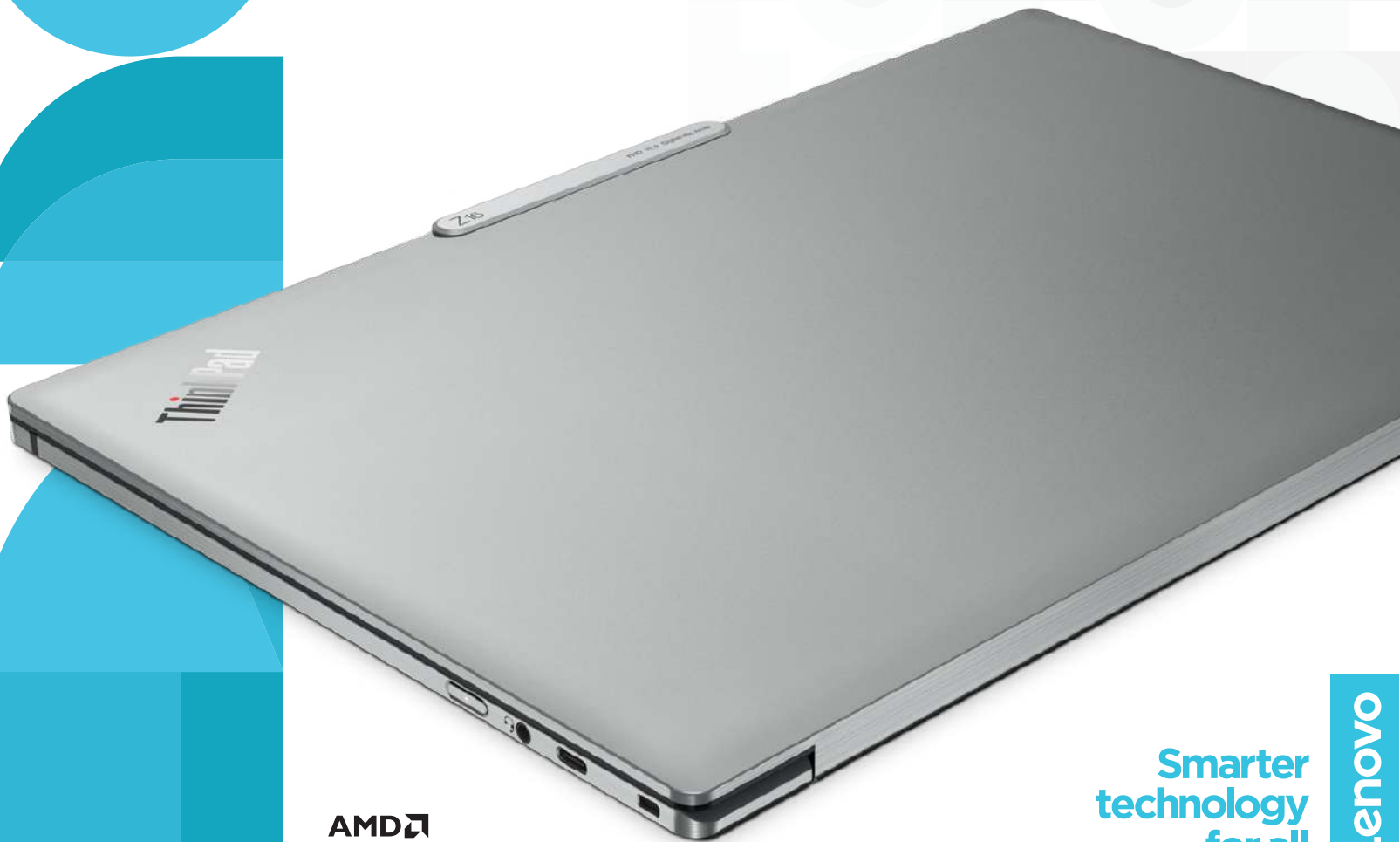


Lenovo ThinkPad Z16

Elevated experience, simple beauty, exceptional power. Introducing ThinkPad Z16—the definition of progressive performance. This sophisticated 16” laptop, powered by the AMD Ryzen™ 9 6950H processor with PRO technologies and optional, ultrathin discrete AMD Radeon™ RX6500M Graphics with SmartShift, exceeds the demands of today’s work-from-anywhere (WFA) workforce.

The user experience reaches new heights, with a super-narrow bezel design that enables a 92+% screen-to-body ratio and the premium camera with new e-shutter. As the workplace continues to evolve, the ThinkPad Z16 is designed to satisfy the aesthetic and functional desires of modern employees while meeting commercial manageability and performance requirements.

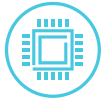


AMD
RYZEN
PRO

Smarter
technology
for all

Lenovo

Lenovo ThinkPad Z16



PROGRESSIVE PERFORMANCE

Fueled by the coveted combination of the AMD Ryzen™ 9 PRO 6950H processor and AMD Radeon™ RX6500M Graphics with SmartShift technology, the ThinkPad Z16 delivers optimal WFA performance. And all-day battery life means productivity never has to hit the pause button.



MODERN DESIGN

The ThinkPad Z16 is engineered with a super-narrow bezel design and 92+% screen-to-body ratio to deliver an exciting visual experience. Elevating its aesthetics is the ultrathin design and sophisticated Arctic Grey color of the recycled aluminum body—a first for ThinkPad.



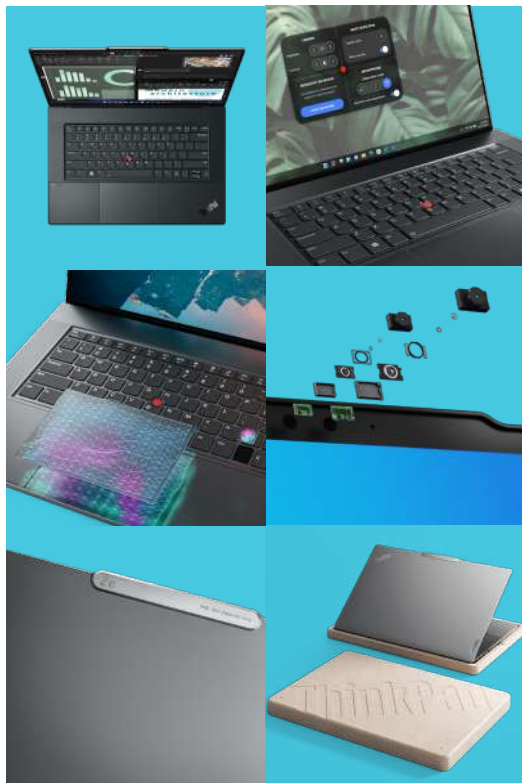
VISIONARY COMMUNICATION

Built with a premium FHD RGB + IR camera for a higher-resolution picture, along with the massive user-facing speakers powered by the premium Dolby Atmos Speaker System, the ThinkPad Z16 delivers an awe-inspiring communication experience.



SOLID SUSTAINABILITY

Beyond progressive form, function, and performance, ThinkPad Z16 is engineered for modern sustainability, built with 75% recycled aluminum and delivered in sleek eco-friendly bamboo and sugarcane fiber packaging that's 100% rapid-renewable and home-compostable.



durability

Although the ThinkPad Z16 delivers next-level innovation, it's still a ThinkPad. Engineered with long lifecycle components and MIL-SPEC tested with 12 methods, 26 procedures, and 200 additional quality checks, this progressive high-performer endures WFA—everywhere.

manageability

AMD PRO manageability and Windows 11, along with Lenovo's exceptional service and support, including Premier Support, Accidental Damage Protection, and Lifecycle Management Deployment Services, make the ThinkPad Z16 the perfect choice for today's IT administrator.

security

The ThinkPad Z16 keeps precious data secure with end-to-end ThinkShield protection, including the IR camera, e-shutter, and standard Windows Hello. Plus, chip-level AMD Memory Guard and the new Microsoft Pluton security processor help eliminate interface exposure and prevent physical attacks.

Lenovo ThinkPad Z16

Lenovo offers a comprehensive portfolio of end-to-end services to support and protect your investment—so you can focus on the job at hand, not IT.

Services



PREMIER SUPPORT

As IT budgets contract, you need to reduce complexity, decrease operational costs, and find ways to increase efficiency from your in-house IT support teams. Lenovo™ Premier Support manages routine support tasks, freeing IT focus on strategic efforts that move the organization forward. Boost end-user productivity and limit downtime with direct access to elite Lenovo engineers who provide unscripted, advanced hardware and software support.



ACCIDENTAL DAMAGE PROTECTION

Protect PCs from damage not covered under warranty and realize significant savings over the cost of repair or a new system. Lenovo Accidental Damage Protection (ADP) covers accidental drops, spills, bumps, and structural failures incurred under normal operating conditions or handling. ADP is performed by Lenovo™-Trained technicians, using Lenovo™-Qualified parts, reducing the need for re-repair. Lenovo's comprehensive diagnostic tools can identify hidden damage that may have otherwise gone untreated.



GREEN DELIVERY

Improve sustainability for a smaller environmental impact. Green Delivery Service delivers devices in bulk packaging to reduce per-unit waste, improve operational efficiency with consolidated shipments, and allow for environmentally friendly packaging disposal. Plus, all boxes use Kraft Sealing Tape to eliminate single-use tape, and by 2025/26, 90% of PC products' packaging will be made from recycled materials.

Accessories

ThinkPad USB-C Dock Gen 2

Modern business depends on a wide variety of PCs—and even brands. This cable docking station expands your mobile potential with power portability.



ThinkPad X1 Active Noise Cancellation Headphones

These lightweight and stylish headphones provide professional conferencing sound quality with ANC/ENC settings. Connect or charge via USB Type-C or Bluetooth® 5.0.



Lenovo ThinkPad Z16

performance

PROCESSOR

AMD Ryzen™ 9 6950H processor with PRO technologies

OPERATING SYSTEM

Windows 11 (Windows 10 DG)

GRAPHICS

Integrated AMD Radeon™ 600M Series Graphics
Discrete AMD Radeon™ RX6500M Graphics with SmartShift technology

CAMERA

FHD 1080p, IR camera standard

MEMORY

Up to 32GB LPDDR5 (dual channel, soldered)

STORAGE

Up to 2TB PCIe Gen4 Performance SSD

BATTERY

Up to 12 hours* (70Whr)
Rapid Charge, 80% in 60 min

AUDIO

Dolby Atmos Speaker System
Dolby Atmos Headphones
Dolby Voice
2x mics

connectivity

INPUT/OUTPUT PORTS

3x USB-C (USB4)
Audio Jack
Full size SD card
Kensington Lock

WI-FI

Wi-Fi 6E
Bluetooth 5.2
LTE CAT4, CAT16

design

DISPLAYS

16.0" 16:10 bent PCB for 4mm bezels
WUXGA IPS 400nit 100% sRGB, Touch & Non-touch
WQUXGA OLED 400nit 100% CG, Touch
Color Calibration; Low Blue Light; TUV certified

DIMENSIONS (W X D X H)

355 x 238 x 15.8 mm / 13.95 x 9.35 x .63 in

WEIGHT

1.97 kg/4.3 lbs

PEN

Optional (available with touch panel)

KEYBOARD

Backlight w/user-facing speakers
1.35m travel

MIL-STD-810G

Yes

COLOR

Arctic Grey Aluminum

*Based on testing with MobileMark 2018. Battery life varies significantly with settings, usage, and other factors. Projected battery life is based on using MM18. Official claims/final results TBD. Official results will be available at results.bapco.com at product launch.

